

DEDICATION

Know all men by these presents, that as Arthur W. Seidman as proprietor and Louise J. Seidman his wife have caused the land hereinafter described to be surveyed, laid out and partitioned so as to be known as OAKLAND and that the streets as shown in said plat are hereby dedicated to the use of the public

Arthur W. Seidman (L.S.)
Louise J. Seidman (L.S.)

signed and sealed in presence of

W. W. Van Horn
J. B. Craig

State of Michigan } ss.
County of St. Joseph }

On this 18th day of June 1896 before me a Justice of the peace in and for said County, personally came the above named Arthur W. Seidman and Louise J. Seidman his wife, known to me to be the persons who executed the above dedication and acknowledged the same to be their free act and deed

Walter W. Van Horn
Justice of the Peace

Examined and Approved

June 20, 1896.

D. B. Ainger,
Deputy Auditor General.

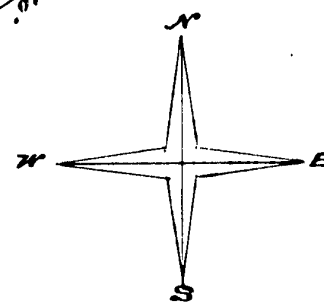
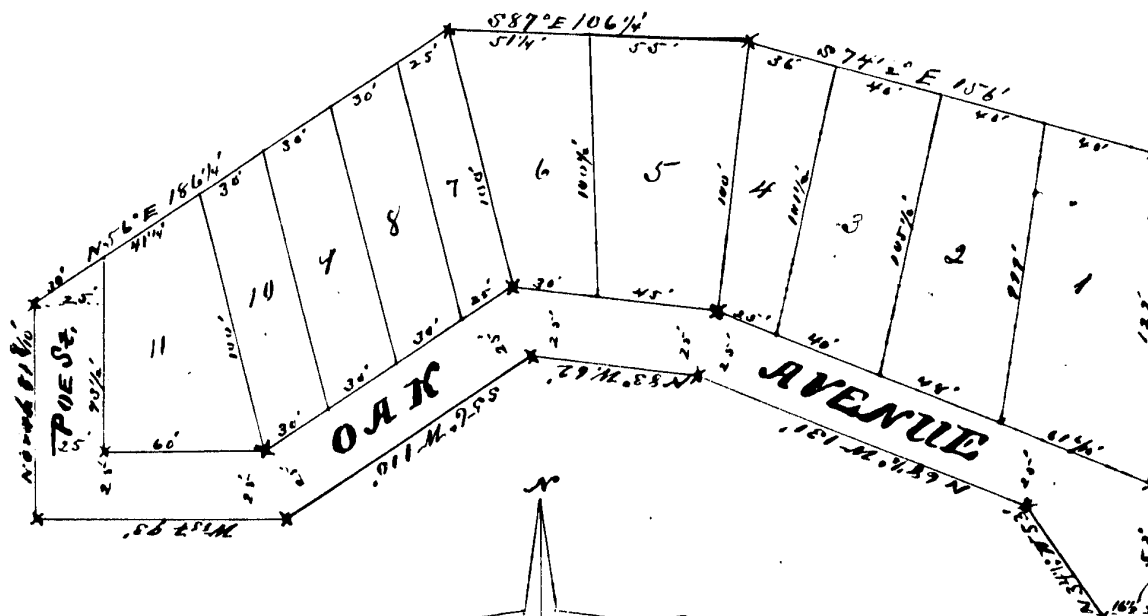
I hereby certify that I have examined the records in my office relating to the description of lands in the within instrument and from such examination it appears that the State and County taxes have been fully paid for the five years preceding the date of said instrument.

Centerville, Mich., July 26, 1896
County Treasurer

REGISTERS OFFICE,
COUNTY OF ST. JOSEPH, } ss.
Received for Record, this 26th day of June A. D. 1896 at 10 o'clock A. M., and Recorded in Vol. 1 of Plat of Deeds, on Page 16

Benj. C. Gladding
Register of Deeds.

377



OAKLAND

A subdivision of the N.W. quarter of section numbered 29 T. 26 N. R. 12 W. bounded as follows to wit: commencing at a stone marked (+) and stone being four hundred and sixty-six feet south and thirteen hundred and twenty-seven feet west of the quarter section corner on the north bound of section 29, said stone having been set and recorded as the North West corner of the recorded plat of GRAND VIEW. From said stone run south on half quarter line 562 feet to stone (+) at South West corner of Grand View plat, thence N76° 47' 17.4" to a stone (+) thence North parallel with the half quarter line 558 ft. to a pointed stone, thence N34° 42' 53 ft. to a pointed stone, thence N68° 1/2' W 13 1/2 ft. to stone (+) thence N13° 24' 42 ft. to stone (+) thence S56° 24' 110 ft. to a stone (+) thence N12° 48' 4" to a stone (+) thence North 81 1/2 ft. to a pointed stone, thence N56° E 186 1/4 ft. to a stone (+), thence S87° E 106 1/4 ft. to a stone (+), thence South 74 1/2° E 156 ft. to point set on half quarter line, thence South on half quarter line 174 ft. to the place of beginning. Containing One acre 48/100 acres.

I hereby certify that the plat hereinafter is a correct one and that permanent monuments consisting of stones have been placed at points marked (+) as shown thereon at all angles in the boundaries of the land patented and at all intersections of streets.

Samuel M. Rice
Surveyor

RECEIVED AND FILED
IN AUDITOR GENERAL'S OFFICE

July 9, 1896
D. B. Ainger
Deputy Auditor General.

State of Michigan } ss.
County of St. Joseph }

We Benj. C. Gladding Register of Deeds, and Samuel S. Rice, Surveyor, hereby certify that we have carefully compared this copy with the original plat of OAKLAND and that it is an exact copy thereof and of the whole of such original map or plat.

Benj. C. Gladding
Samuel M. Rice
Register of Deeds
Surveyor

State of Michigan } ss.
County of St. Joseph }

We Benj. C. Gladding Register of Deeds, and Samuel S. Rice, Surveyor, hereby certify that we have carefully compared the annexed copy with the plat of OAKLAND now of record in the office of said Register of Deeds, and that it is a true transcript therefrom and of the whole of such record.

Benj. C. Gladding
Samuel M. Rice
Register of Deeds
Surveyor

4635

1877