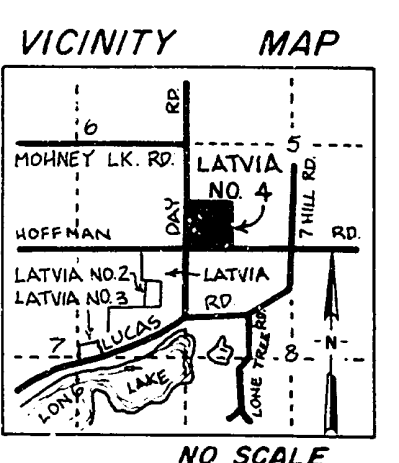
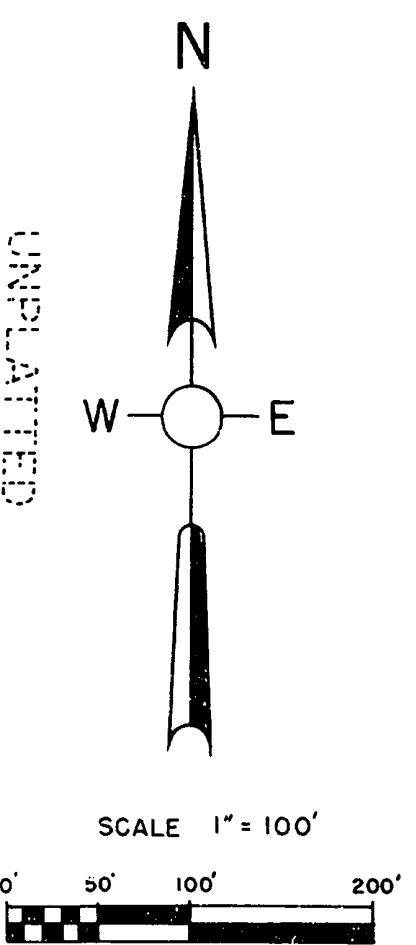
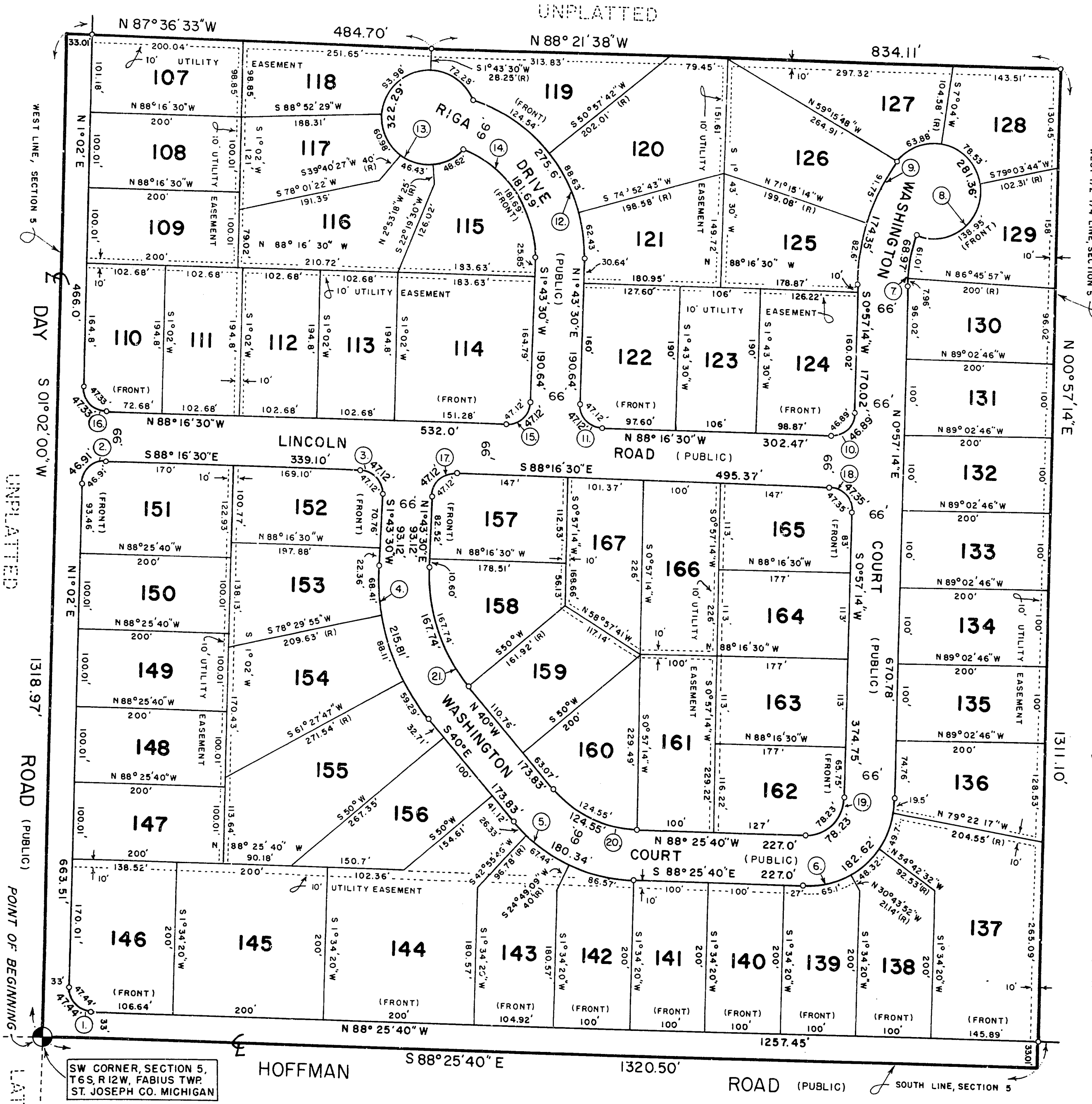


# LATVIA NO. 4

A SUBDIVISION SITUATED IN THE SW 1/4 OF THE SW 1/4 OF SECTION 5,  
TOWN 6 SOUTH, RANGE 12 WEST, FABIUS TOWNSHIP, ST. JOSEPH COUNTY, MICHIGAN



SW CORNER, SECTION 5,  
T6S, R12W, FABIUS TWP.  
ST. JOSEPH CO. MICHIGAN

CURVE DATA

CURVE	RADIUS	ARC	Δ ANGLE	CHORD
1.	30.28'	47.44'	89° 27' 40"	N 43° 41' 45" W 42.62'
2.	29.63'	46.91'	90° 41' 30"	N 46° 22' 47" E 42.17'
3.	30.00'	47.12'	90° 00' 00"	S 43° 16' 30" E 42.43'
4.	296.33'	215.81'	41° 43' 30"	S 19° 08' 14" E 211.06'
5.	213.36'	180.34'	48° 25' 40"	S 64° 12' 55" E 175.02'
6.	115.46'	182.62'	90° 37' 06"	N 46° 15' 45" E 164.16'
7.	200.00'	68.97'	19° 45' 35"	N 10° 49' 58" E 68.63'
8.	62.50'	281.36'	257° 55' 54"	N 12° 33' 58" W 97.24'
9.	266.00'	174.35'	37° 33' 13"	S 19° 43' 49" W 171.24'
10.	29.60'	46.89'	90° 46' 16"	S 46° 20' 25" W 42.14'
11.	30.00'	47.12'	90° 00' 00"	N 43° 16' 30" W 42.43'
12.	212.33'	275.60'	74° 22' 00"	N 35° 27' 29" W 256.65'
13.	62.50'	322.29'	295° 26' 34"	S 10° 15' 52" W 66.75'
14.	146.33'	181.69'	71° 08' 28"	S 33° 50' 45" E 170.24'
15.	30.00'	47.12'	90° 00' 00"	S 46° 43' 30" W 42.43'
16.	30.36'	47.33'	89° 18' 30"	N 43° 37' 11" W 42.68'
17.	30.00'	47.12'	90° 00' 00"	N 46° 43' 30" E 42.43'
18.	30.40'	47.35'	89° 13' 44"	S 43° 39' 37" E 42.71'
19.	49.46'	78.23'	90° 37' 06"	S 46° 15' 44" W 70.33'
20.	147.36'	124.55'	48° 25' 40"	N 64° 12' 58" W 120.88'
21.	230.33'	167.74'	41° 43' 30"	N 19° 08' 14" W 164.05'

UNPLATTED

CERTIFIED TRUE COPY OF  
RECORDED PLAT

*Loren E. Monroe*  
LOREN E. MONROE  
STATE TREASURER  
*Richard E. Sommers*  
Richard E. Sommers, Plat Engineer  
Date September 18, 1920

- LEGEND
- ALL DIMENSIONS ARE IN FEET.
  - ALL CURVE DIMENSIONS ARE ARC DIMENSIONS.
  - CONCRETE MONUMENTS HAVE BEEN PLACED AT ALL POINTS MARKED 'O.'
  - LOT CORNERS HAVE BEEN MARKED BY A 1/2 INCH IRON BAR.
  - BEARINGS WERE ESTABLISHED FROM THE RECORDED PLAT OF LATVIA, LIBER 4 OF PLATS, PAGE 95 & 95-A.
  - (R) INDICATES RADIAL LOT LINES.

THIS PLAT IS SUBJECT TO RESTRICTIONS AS REQUIRED BY ACT 288 1967, AS AMENDED, ON CERTAIN LOTS WITH RESPECT TO THE REQUIREMENTS OF THE MICHIGAN DEPARTMENT OF PUBLIC HEALTH WHICH ARE RECORDED IN LIBER 459, PAGE 286.



57678