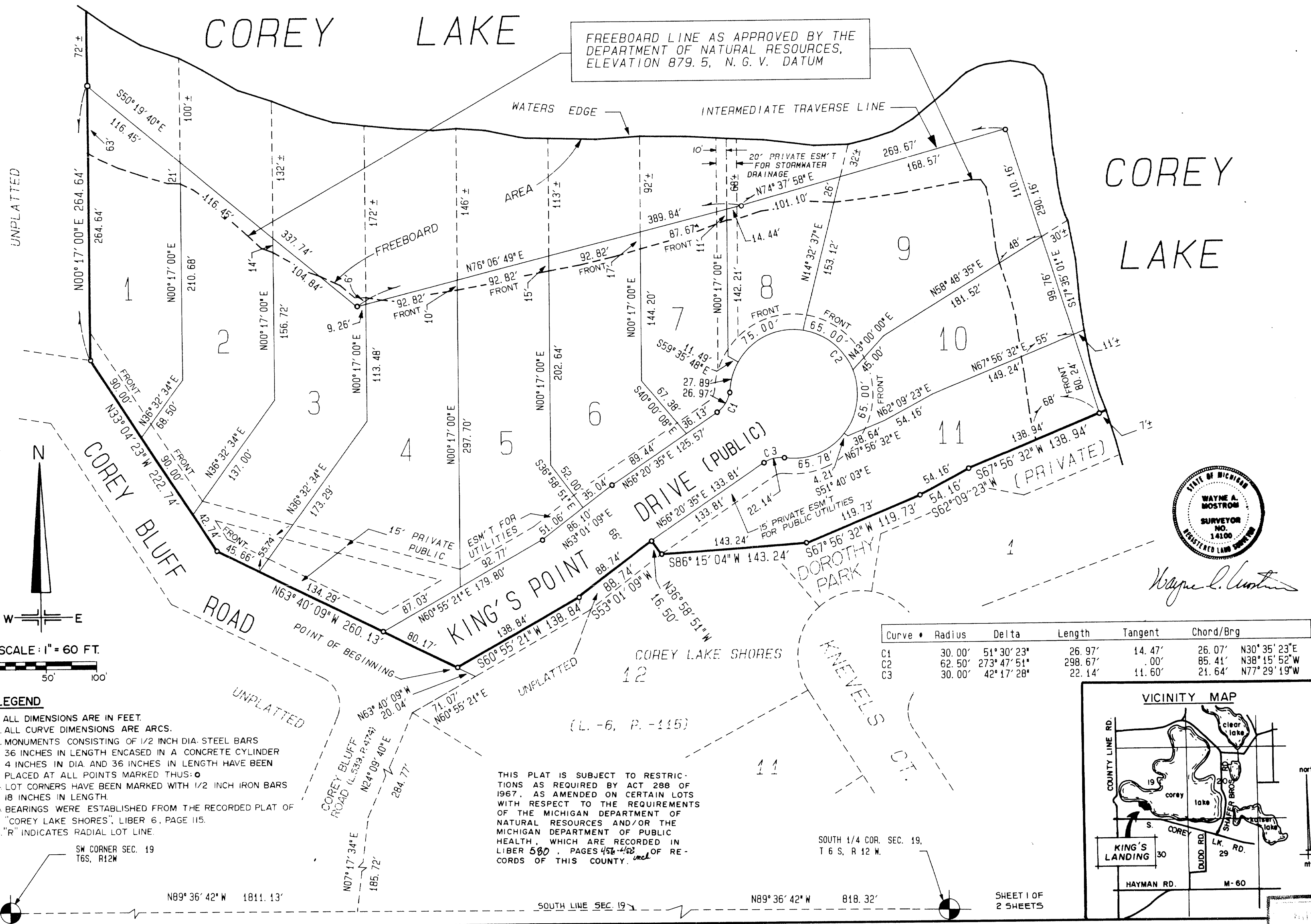


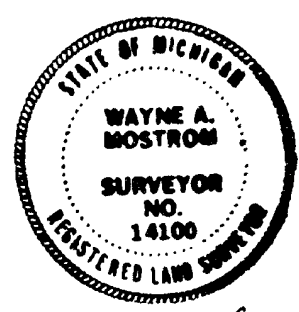
KING'S LANDING

A SUBDIVISION SITUATED IN THE SOUTH 1/2 OF SECTION 19, T 6 S, R 12 W,
FABIUS TWP., ST. JOSEPH COUNTY, MICHIGAN



FREEBOARD LINE AS APPROVED BY THE
DEPARTMENT OF NATURAL RESOURCES,
ELEVATION 879.5, N. G. V. DATUM

COREY
LAKE

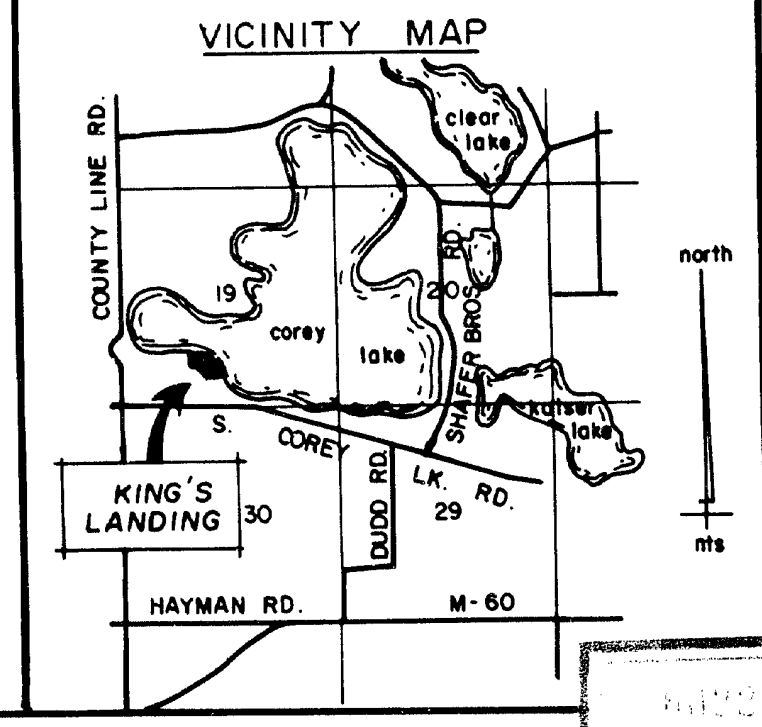


Wayne A. Mstrom

Curve	Radius	Delta	Length	Tangent	Chord/Brg
C1	30.00'	51° 30' 23"	26.97'	14.47'	26.07' N30° 35' 23" E
C2	62.50'	273° 47' 51"	298.67'	.00'	85.41' N38° 15' 52" W
C3	30.00'	42° 17' 28"	22.14'	11.60'	21.64' N77° 29' 19" W

- LEGEND**
1. ALL DIMENSIONS ARE IN FEET.
 2. ALL CURVE DIMENSIONS ARE ARCS.
 3. MONUMENTS CONSISTING OF 1/2 INCH DIA. STEEL BARS 36 INCHES IN LENGTH ENCASED IN A CONCRETE CYLINDER 4 INCHES IN DIA. AND 36 INCHES IN LENGTH HAVE BEEN PLACED AT ALL POINTS MARKED THUS: ○
 4. LOT CORNERS HAVE BEEN MARKED WITH 1/2 INCH IRON BARS 18 INCHES IN LENGTH.
 5. BEARINGS WERE ESTABLISHED FROM THE RECORDED PLAT OF "COREY LAKE SHORES", LIBER 6, PAGE 115.
 6. "R" INDICATES RADIAL LOT LINE.

THIS PLAT IS SUBJECT TO RESTRICTIONS AS REQUIRED BY ACT 288 OF 1967, AS AMENDED ON CERTAIN LOTS WITH RESPECT TO THE REQUIREMENTS OF THE MICHIGAN DEPARTMENT OF NATURAL RESOURCES AND/OR THE MICHIGAN DEPARTMENT OF PUBLIC HEALTH, WHICH ARE RECORDED IN LIBER 580, PAGES 456-462 OF RECORDS OF THIS COUNTY.



KING'S LANDING

A SUBDIVISION SITUATED IN THE SOUTH 1/2 OF SECTION 19, T 6 S, R 12 W,
FABIUS TWP., ST. JOSEPH COUNTY, MICHIGAN

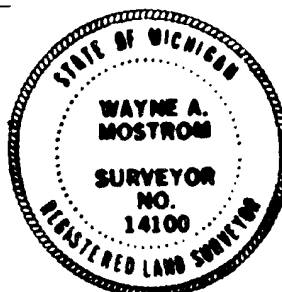
SURVEYOR'S CERTIFICATE

I, WAYNE A. MOSTROM, SURVEYOR, CERTIFY THAT I HAVE SURVEYED, DIVIDED, AND MAPPED THE LAND SHOWN ON THIS PLAT, DESCRIBED AS FOLLOWS:
KING'S LANDING, A SUBDIVISION SITUATED IN THE SOUTH 1/2 OF SECTION 19, T 6 S, R 12 W, FABIUS TWP., ST. JOSEPH COUNTY, MICHIGAN.
COMMENCING AT THE SOUTH 1/4 CORNER OF SAID SECTION 19 AND RUNNING THENCE N 89°36'42"W, ALONG THE SOUTH LINE OF SAID SECTION, 818.32 FEET, THENCE FOLLOWING THE BOUNDARY OF "COREY LAKE SHORES" (VOL. 6, PAGES 115, 116, AND 117) ALONG THE FOLLOWING THREE COURSES, THENCE N 07°17'34"E 185.72 FEET, THENCE N 24°09'40"E 284.77 FEET, THENCE N 60°55'21"E 71.07 FEET, THENCE N 63°40'09"W 20.04 FEET TO THE POINT OF BEGINNING OF THIS DESCRIPTION; THENCE FOLLOWING THE NORTHEASTERLY BOUNDARY OF "COREY BLUFF DRIVE" ALONG THE FOLLOWING TWO COURSES, THENCE N 63°40'09"W 260.13 FEET, THENCE N 33°04'23"W 222.74 FEET, THENCE N 00°17'00"E 264.64 FEET, THENCE FOLLOWING AN INTERMEDIATE TRAVERSE LINE ALONG THE SHORE OF COREY LAKE ALONG THE FOLLOWING FOUR COURSES, THENCE S 50°19'40"E 337.74 FEET, THENCE N 76°06'49"E 389.84 FEET, THENCE N 74°37'58"E 269.67 FEET, THENCE S 17°35'01"E 290.16 FEET, THENCE FOLLOWING THE BOUNDARY OF SAID "COREY LAKE SHORES" (VOL. 6, PAGES 115, 116, AND 117) ALONG THE FOLLOWING FOUR COURSES, THENCE S 67°56'32"W 138.94 FEET, THENCE S 62°09'23"W 54.16 FEET, THENCE S 67°56'32"W 119.73 FEET, THENCE S 86°15'04"W 143.24 FEET TO A CONCRETE MONUMENT, THENCE N 36°58'51"W 16.50 FEET, THENCE S 53°01'09"W 88.74 FEET, THENCE S 60°55'21"W 138.84 FEET TO THE POINT OF BEGINNING, INCLUDING ALL LAND TO THE WATERS EDGE.

THIS PLAT CONTAINS 9.219 ACRES, MORE OR LESS.
THIS PLAT CONTAINS 11 NUMBERED LOTS; THAT I HAVE MADE SUCH SURVEY, LAND DIVISION, AND PLAT BY THE DIRECTION OF THE OWNERS OF SUCH LAND; THAT SUCH PLAT IS A CORRECT REPRESENTATION OF ALL EXTERIOR BOUNDARIES OF THE LAND SURVEYED AND THE SUBDIVISION OF IT; THAT THE REQUIRED MONUMENTS AND LOT MARKERS HAVE BEEN LOCATED IN THE GROUND AS REQUIRED BY SECTION 125 OF THE ACT; THAT THE ACCURACY OF THE SURVEY IS WITHIN THE LIMITS REQUIRED BY SECTION 126 OF THE ACT; THAT THE BEARINGS SHOWN ON THE PLAT ARE EXPRESSED AS REQUIRED BY SECTION 126 (3) OF THE ACT AND AS EXPLAINED IN THE LEGEND.

DEC. 17, 1988

Wayne A. Mostrom
WAYNE A. MOSTROM, PRESIDENT
R.L.S. NO. 14100
P.O. BOX 85, 108 W. MAIN ST
CENTREVILLE, MI 49032



COUNTY TREASURER'S CERTIFICATE

THE RECORDS IN MY OFFICE SHOW NO UNPAID TAXES OR SPECIAL ASSESSMENTS FOR THE LAST FIVE YEARS PRECEDING Dec. 22, 19 88, INVOLVING LANDS INCLUDED IN THIS PLAT.

Janet L. Beals
JANET L. BEALS, ST. JOSEPH COUNTY TREASURER

PROPRIETOR'S CERTIFICATE

WE, AS PROPRIETORS, CERTIFY THAT WE HAVE CAUSED THE LAND EMBRACED IN THIS PLAT TO BE SURVEYED, DIVIDED, MAPPED AND DEDICATED AS REPRESENTED ON THIS PLAT AND THAT KING'S POINT DRIVE IS FOR THE USE OF THE PUBLIC, THAT THE PUBLIC UTILITY EASEMENTS ARE PRIVATE EASEMENTS AND THAT ALL OTHER EASEMENTS ARE FOR THE USE SHOWN ON THE PLAT. LOTS 1 THROUGH 11, INCLUSIVE, EXTEND TO THE WATERS EDGE OF COREY LAKE ON THE PROJECTION OF THE LOT LINES EXTENDED AS SHOWN ON THE PLAT.

Bernard King
BERNARD KING
5715 MERRIMAC ROAD
COTE ST. LUC, QUEBEC H4W 1S5

Joan King
JOAN KING
5715 MERRIMAC ROAD
COTE ST. LUC, QUEBEC H4W 1S5

Wayne A. Mostrom
WITNESS, WAYNE A. MOSTROM

Joseph W. Yogus Jr.
WITNESS, JOSEPH W. YOGUS, JR.

ACKNOWLEDGEMENT

STATE OF MICHIGAN SS
ST. JOSEPH COUNTY

PERSONALLY CAME BEFORE ME THIS 20th DAY OF December, 1988, THE ABOVE NAMED BERNARD KING AND JOAN KING, HUSBAND AND WIFE, KNOWN TO ME TO BE THE PERSONS WHO EXECUTED THE FOREGOING INSTRUMENT, AND ACKNOWLEDGED THAT THEY EXECUTED THE SAME AS THEIR FREE ACT AND DEED.

NOTARY PUBLIC *Lila Mostrom*, COUNTY, MICHIGAN.
LILA MOSTROM, ST. JOSEPH

MY COMMISSION EXPIRES January 6, 19 91.

DRAIN COMMISSIONER'S CERTIFICATE

APPROVED ON December 22, 19 88, AS COMPLYING WITH SECTION 192 OF ACT 288, P.A. 1967, AND THE APPLICABLE RULES AND REGULATIONS PUBLISHED BY MY OFFICE IN THE COUNTY OF ST. JOSEPH.

Maurice S. Kline
MAURICE S. KLINE, DRAIN COMMISSIONER

CERTIFICATE OF COUNTY ROAD COMMISSIONERS

APPROVED ON DECEMBER 29th, 19 88, AS COMPLYING WITH SECTION 183, OF ACT 288, P.A. 1967, AND THE APPLICABLE PUBLISHED RULES AND REGULATIONS OF THE BOARD OF ROAD COMMISSIONERS OF ST. JOSEPH COUNTY.

Frank J. Shellenbarger
FRANK J. SHELLENBARGER, CHAIRMAN

Mason C. Meyer
MASON C. MEYER, MEMBER

Harold K. Outman
HAROLD K. OUTMAN, MEMBER

CERTIFICATE OF MUNICIPAL APPROVAL

I CERTIFY THAT THIS PLAT WAS APPROVED BY THE TOWNSHIP BOARD OF THE TOWNSHIP OF FABIUS, AT A MEETING HELD JANUARY 6th, 19 89, AND WAS REVIEWED AND FOUND TO BE IN COMPLIANCE WITH ACT 188, P.A. OF 1967. PRELIMINARY PLAT WAS APPROVED ON June 28th, 19 88, BY THE ST. JOSEPH COUNTY HEALTH DEPARTMENT.

John T. Nykun
JOHN T. NYKUN, CLERK

COUNTY PLAT BOARD CERTIFICATE

THIS PLAT HAS BEEN REVIEWED AND IS APPROVED BY THE ST. JOSEPH COUNTY PLAT BOARD ON January 19, 19 89, AS BEING IN COMPLIANCE WITH ALL OF THE PROVISIONS OF ACT 288, P.A. 1967, AND THE PLAT BOARD'S APPLICABLE RULES AND REGULATIONS.

Patricia L. Van Emon
PATRICIA L. VAN EMON,
REGISTER OF DEEDS

Janet L. Beals
JANET L. BEALS,
COUNTY TREASURER

Beverly J. Burnham
BEVERLY J. BURNHAM
COUNTY CLERK

RECORDING CERTIFICATE
STATE OF MICHIGAN
ST. JOSEPH COUNTY

THIS PLAT WAS RECEIVED FOR RECORD ON THE 31st DAY OF March, 19 89, AT 1:50 P.M. AND RECORDED IN LIBER 6 ON PAGES 140 + 141.

Patricia L. Van Emon
PATRICIA L. VAN EMON,
REGISTER OF DEEDS

CERTIFIED TRUE COPY OF
RECORDED PLAT
BY DEPARTMENT OF COMMERCE
Richard E. Romax
RICHARD E. ROMAX, L.S.
Michigan Plat Section
Date Aug 28 1989