

DELIHANT FARMS

A SUBDIVISION SITUATED IN THE SOUTH FR'L. 1/2 OF SECTION 7, TOWN 6 SOUTH, RANGE 12 WEST, FABIUS TOWNSHIP, ST. JOSEPH COUNTY, MICHIGAN.

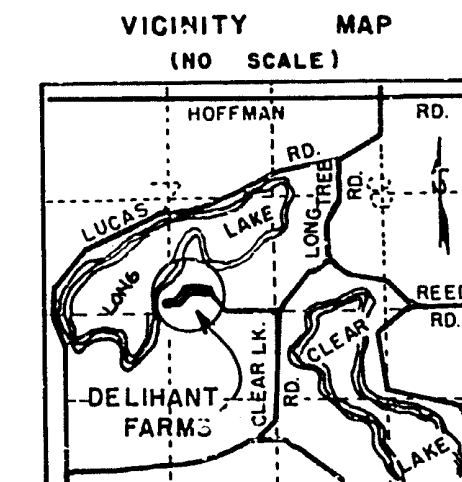
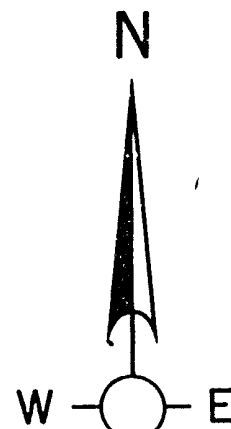
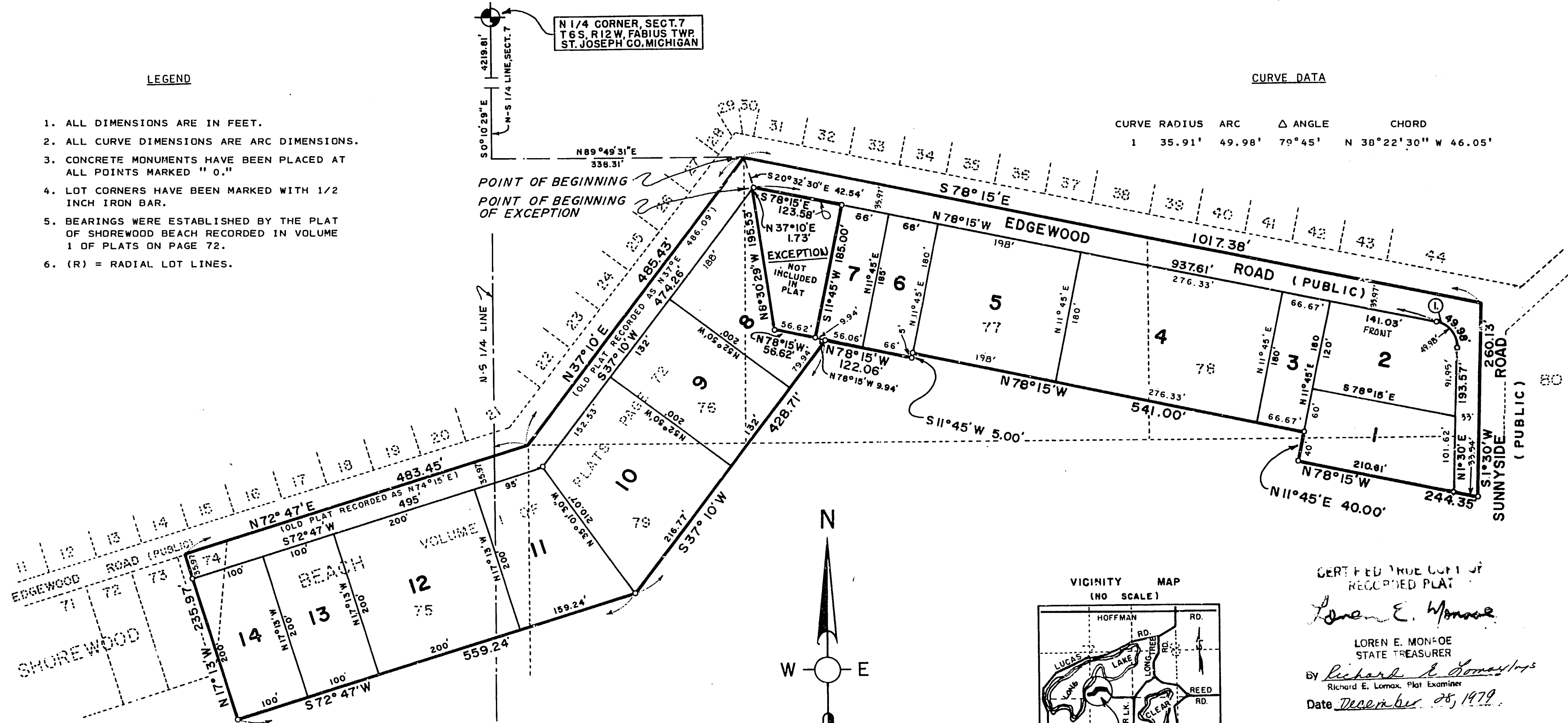
LEGEND

1. ALL DIMENSIONS ARE IN FEET.
2. ALL CURVE DIMENSIONS ARE ARC DIMENSIONS.
3. CONCRETE MONUMENTS HAVE BEEN PLACED AT ALL POINTS MARKED "O."
4. LOT CORNERS HAVE BEEN MARKED WITH 1/2 INCH IRON BAR.
5. BEARINGS WERE ESTABLISHED BY THE PLAT OF SHOREWOOD BEACH RECORDED IN VOLUME 1 OF PLATS ON PAGE 72.
6. (R) = RADIAL LOT LINES.

CURVE DATA

CURVE RADIUS	ARC	Δ ANGLE	CHORD
1	35.91'	49.98'	N 38°22'30" W 46.05'

N 1/4 CORNER, SECT. 7
T 6 S., R 12 W., FABIUS TWP.
ST. JOSEPH CO., MICHIGAN



CERTIFIED TRUE COPY OF RECORDED PLAT

Loren E. Monroe

LOREN E. MONROE
STATE TREASURER

By *Richard E. Lomax*
Richard E. Lomax, Plat Examiner

Date *December 28, 1979*

RESTRICTION CERTIFICATE

THIS PLAT IS SUBJECT TO RESTRICTIONS AS REQUIRED BY ACT 288 OF 1967, AS AMENDED, ON CERTAIN LOTS WITH RESPECT TO THE REQUIREMENTS OF THE MICHIGAN DEPARTMENT OF PUBLIC HEALTH, WHICH ARE RECORDED IN LIBER 451 ON PAGE 466.

