

CLEAR LAKE HIGHLAND PARK

(COPY)
IN THE NORTH HALF OF SECTIONS 17 AND 18, TOWN 6 SOUTH, RANGE 12 WEST, FABIUS TOWNSHIP, ST. JOSEPH COUNTY, MICHIGAN.

I hereby certify this copy is a true copy of map or plat forwarded the Register of deeds for record.
Date July 13, 1961
Filed July 18, 1961
Deed AM EASEMENT APPROVED
Date July 13, 1961

OTIS M. SMITH
AUGUR GENERAL
By *Richard E. Tomasz*
Richard E. Tomasz, Plat Examining

Register's Office
St. Joseph County, Michigan
Plat of
Clear Lake Highland Park
was Recorded this 15th day of
July A.D., 1961 at 10:37 o'clock
A.M. of July 4 of 1961
Donna E. Donmyer

DESCRIPTION OF LAND PLATTED

THE LAND EMBRACED IN THE ANNEXED PLAT OF CLEAR LAKE HIGHLAND PARK, IN THE NORTH HALF OF SECTIONS 17 AND 18, TOWN 6 SOUTH, RANGE 12 WEST, FABIUS TOWNSHIP, ST. JOSEPH COUNTY, MICHIGAN, IS DESCRIBED AS FOLLOWS: BEGINNING AT THE QUARTER POST COMMON TO SECTIONS 17 AND 18, TOWN 6 SOUTH, RANGE 12 WEST, THENCE, WITH BEARINGS REFERENCED TO THE SECTION LINE COMMON TO SAID SECTIONS 17 AND 18 AS A MERIDIAN, NORTH 89 DEGREES 35 MINUTES WEST 310.00 FEET, THENCE NORTH 33 DEGREES 0 MINUTES EAST 500.45 FEET, THENCE ALONG A CURVE TO THE LEFT, WHICH HAS A RADIUS OF 922.31 FEET, TO THE FAR END OF A CHORD WHICH BEARS NORTH 16 DEGREES 0 MINUTES EAST 500.45 FEET, THENCE NORTH 60.57 FEET, THENCE SOUTH 51 DEGREES 29 MINUTES EAST 33.0 FEET TO THE WEST EIGHTH POST OF THE NORTHWEST QUARTER OF SAID SECTION 17, THENCE SOUTH, ALONG THE WEST LINE OF SAID SECTION 17, A DISTANCE OF 1.2 FEET, THENCE EAST 553.24 FEET, THENCE SOUTH 1 DEGREE 40 MINUTES WEST 293.79 FEET, THENCE SOUTH 17 DEGREES 37 MINUTES EAST 189.45 FEET, THENCE SOUTH 45 DEGREES 07 MINUTES EAST 350.65 FEET, THENCE SOUTH 59 DEGREES 09 MINUTES EAST 480.40 FEET, THENCE SOUTH 29 DEGREES 40 MINUTES EAST 184.50 FEET, THENCE SOUTH 0 DEGREES 58 MINUTES EAST 115.00 FEET TO THE EAST AND WEST QUARTER LINE OF SAID SECTION 17, THENCE NORTH 29 DEGREES 35 MINUTES WEST, ALONG SAID QUARTER LINE, 1364.42 FEET TO BEGINNING. CONTAINING 59 LOTS AND 1 PARK.

KNOW ALL MEN BY THESE PRESENTS, THAT WE, GEORGE ZERFAS AND ELIZABETH ZERFAS, HIS WIFE, AND MARGARET E. SELTZER, AS PROPRIETORS, HAVE CAUSED THE LAND EMBRACED IN THE ANNEXED PLAT TO BE SURVEYED, LAID OUT AND PLATTED, TO BE KNOWN AS CLEAR LAKE HIGHLAND PARK, IN THE NORTH HALF OF SECTIONS 17 AND 18, TOWN 6 SOUTH, RANGE 12 WEST, FABIUS TOWNSHIP, ST. JOSEPH COUNTY, MICHIGAN, AND THAT ELIZABETH DRIVE 4 AND CLEAR LAKE DRIVE ARE HEREBY DEDICATED TO THE USE OF THE PUBLIC. THE SIDE LINES OF LOTS 37 THROUGH 57 INCLUSIVE AND THE PARK EXTEND TO CLEAR LAKE. THE PARK IS HEREBY DEDICATED TO THE USE OF THE OWNERS OF LOTS IN SAID SUBDIVISION AND ANY SUBSEQUENT ADDITIONS THERETO. THE DRAINAGE EASEMENTS ARE DEDICATED TO THE USE OF THE ST. JOSEPH COUNTY ROAD COMMISSION FOR DRAINAGE PURPOSES.

SIGNED AND SEALED
IN PRESENCE OF
Thad W. Clark THAD W. CLARK
Leonard E. Bullard LEONARD E. BULLARD
George Zerfas GEORGE ZERFAS
Elizabeth Zerfas ELIZABETH ZERFAS
Margaret E. Seltzer MARGARET E. SELTZER

STATE OF MICHIGAN
COUNTY OF ST. JOSEPH
ON THIS 23rd DAY OF JUNE, 1961, BEFORE ME, A NOTARY PUBLIC IN AND FOR SAID COUNTY, PERSONALLY APPEARED GEORGE ZERFAS AND ELIZABETH ZERFAS, HUSBAND AND WIFE AND MARGARET E. SELTZER, AS PROPRIETORS, KNOWN TO ME TO BE THE PERSONS WHO EXECUTED THE ABOVE DEDICATION AND ACKNOWLEDGED THE SAME TO BE THEIR FREE ACT AND DEED.

Leonard E. Bullard
LEONARD E. BULLARD
NOTARY PUBLIC, ST. JOSEPH COUNTY, MICHIGAN.
MY COMMISSION EXPIRES JANUARY 26, 1962.

CERTIFICATE OF APPROVAL
BY COUNTY PLAT BOARD
THIS PLAT WAS APPROVED ON THE 11th DAY OF July, 1961, BY THE ST. JOSEPH COUNTY PLAT BOARD.

Donna E. Donmyer
DONNA E. DONMYER, REGISTER OF DEEDS.
John W. Marvin
JOHN W. MARVIN, COUNTY CLERK.

Richard K. Olin
RICHARD K. OLIN, COUNTY TREASURER.
R. N. Beebe
R. N. BEEBE, DRAIN COMMISSIONER.

CERTIFICATE OF APPROVAL BY
COUNTY ROAD COMMISSION
THIS PLAT HAS BEEN EXAMINED AND WAS APPROVED ON THE 6 DAY OF July, 1961, BY THE ST. JOSEPH COUNTY BOARD OF ROAD COMMISSIONERS.

Ivan Bent
IVAN BENT, CHAIRMAN.
ROLLO CRAFTS, MEMBER.
D. W. Arney
D. W. ARNEY, MEMBER.

CERTIFICATE OF MUNICIPAL APPROVAL
THIS PLAT WAS APPROVED BY THE TOWNSHIP BOARD OF THE TOWNSHIP OF FABIUS AT A MEETING HELD July 1, 1961, AND THAT THE WIDTH OF LOTS IS IN COMPLIANCE WITH REQUIREMENTS OF SECTION 30, ACT 172, OF 1929, AS AMENDED.

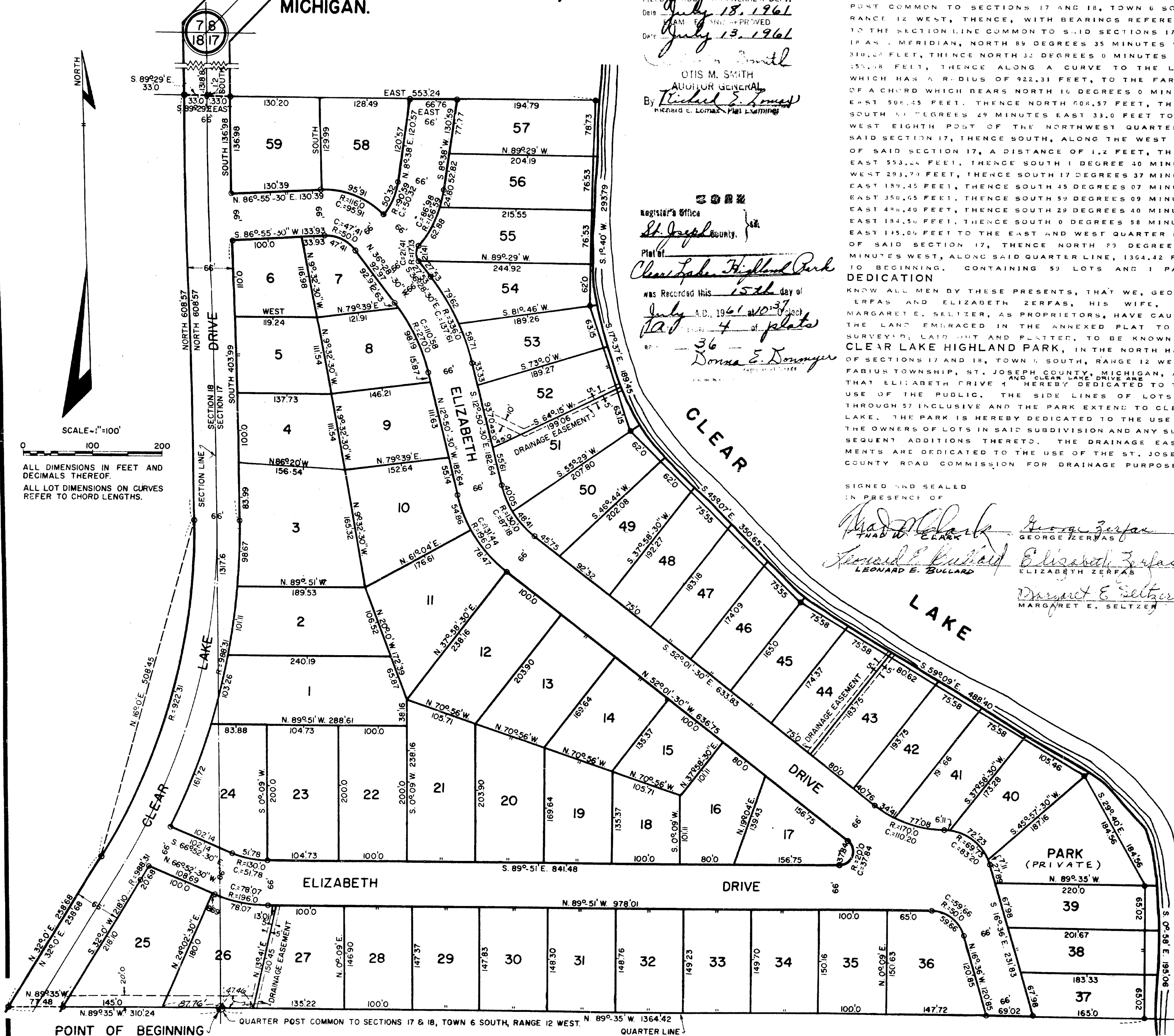
Raymond A. Krull
RAYMOND A. KRULL, CLERK.

COUNTY TREASURER'S CERTIFICATE
OFFICE OF THE COUNTY TREASURER, ST. JOSEPH COUNTY. I HEREBY CERTIFY THAT THERE ARE NO TAX LIENS OR TITLES HELD BY THE STATE ON THE LANDS DESCRIBED HEREON, AND THAT THERE ARE NO TAX LIENS OR TITLES HELD BY INDIVIDUALS ON SAID LANDS, FOR THE FIVE YEARS PRECEDING THE 1st DAY OF July, 1961, AND THAT THE TAXES FOR SAID PERIOD OF FIVE YEARS ARE FULLY PAID, AS SHOWN BY THE RECORDS OF THIS OFFICE. THIS CERTIFICATE DOES NOT APPLY TO TAXES, IF ANY, NOW IN PROCESS OF COLLECTION BY TOWNSHIP, CITY OR VILLAGE COLLECTING OFFICERS.

Richard K. Olin
RICHARD K. OLIN, COUNTY TREASURER.

SURVEYOR'S CERTIFICATE
I HEREBY CERTIFY THAT THE PLAT HEREON DELINEATED IS A CORRECT ONE AND THAT PERMANENT METAL MONUMENTS CONSISTING OF BARS NOT LESS THAN ONE-HALF INCH IN DIAMETER, AND 36 INCHES IN LENGTH, ENCASED IN A CONCRETE CYLINDER AT LEAST FOUR INCHES IN DIAMETER AND 36 INCHES IN DEPTH, HAVE BEEN PLACED AT ALL POINTS MARKED THUS (O) AS THEREON SHOWN AT ALL ANGLES IN THE BOUNDARIES OF THE LAND PLATTED, AT ALL INTERSECTIONS OF STREETS, AND AT THE INTERSECTIONS OF STREETS WITH THE BOUNDARIES OF THE PLAT AS SHOWN ON SAID PLAT.

Wenley O. Smith
WENLEY O. SMITH, REGISTERED LAND SURVEYOR.



44073