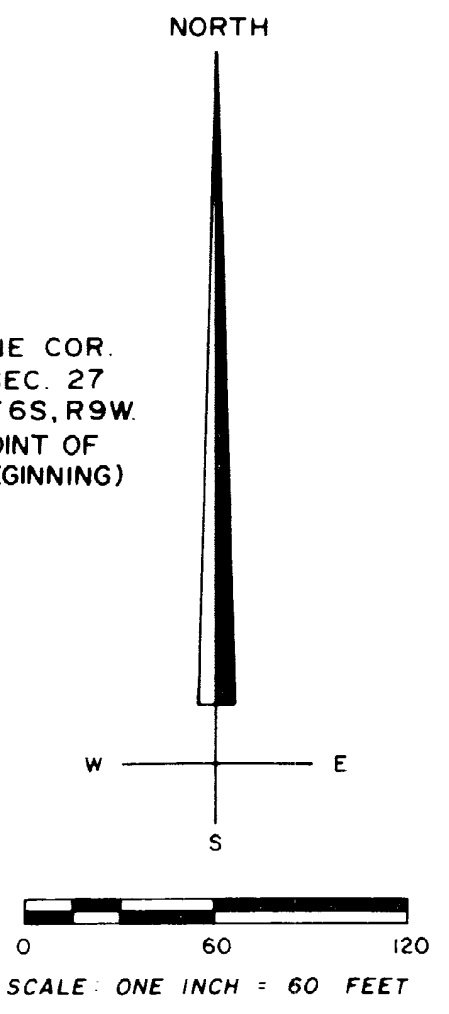
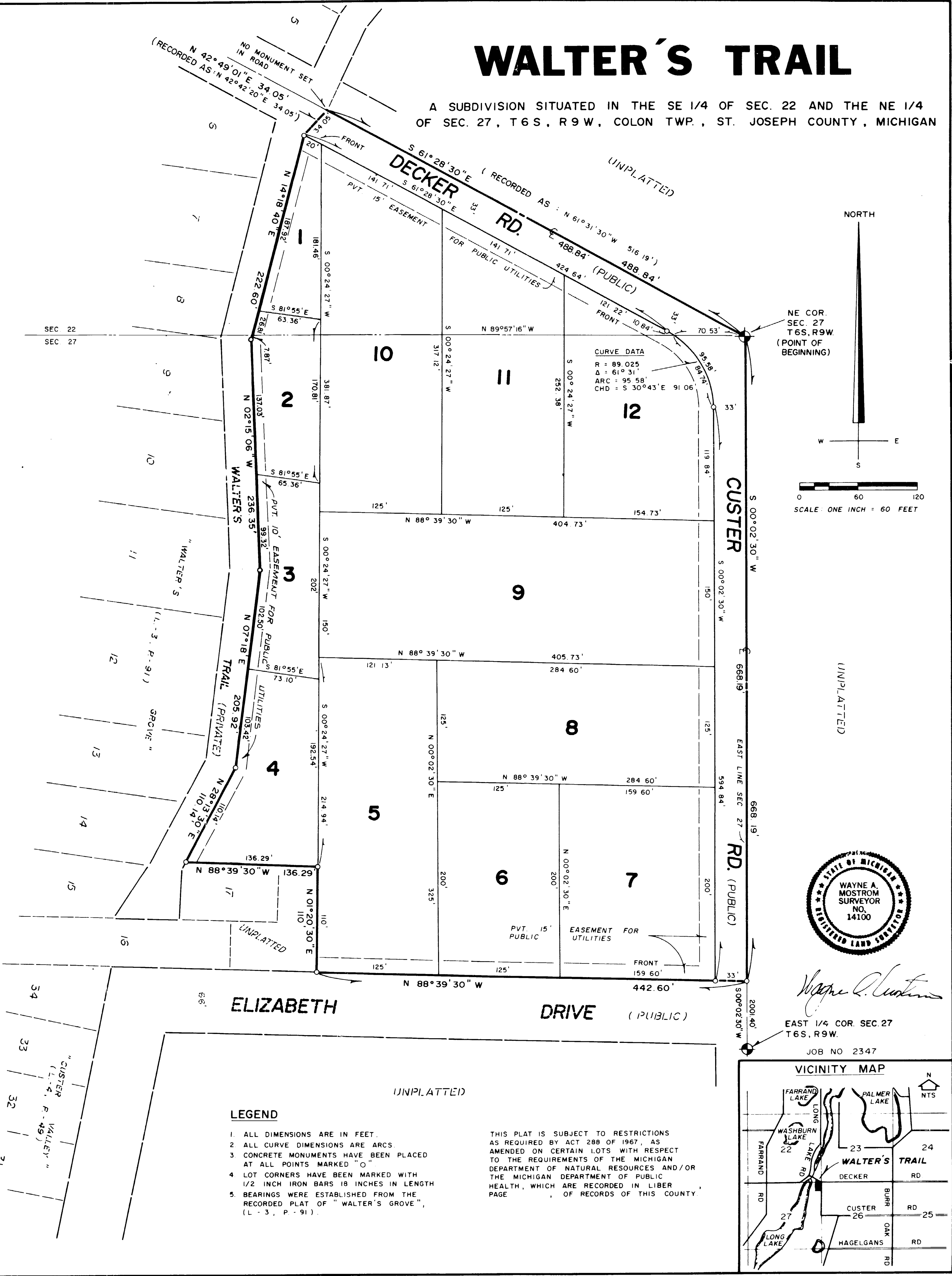
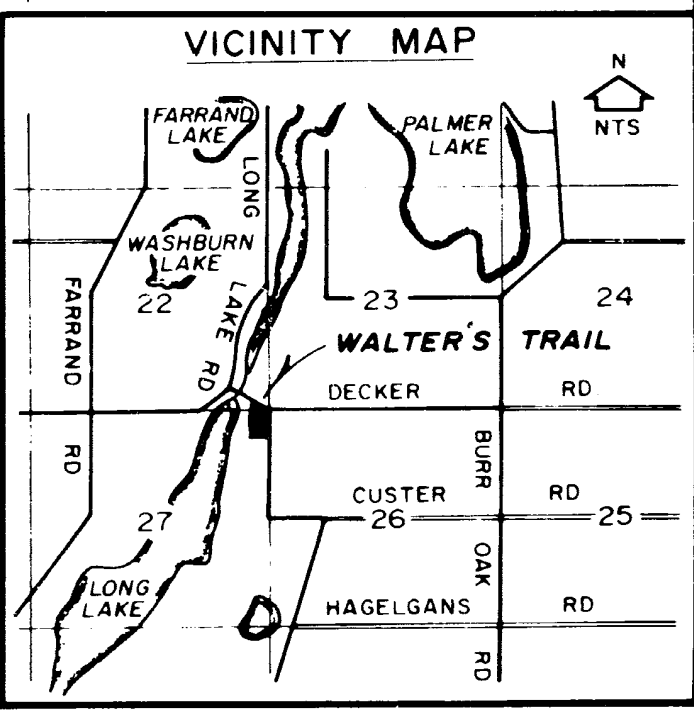


WALTER'S TRAIL

A SUBDIVISION SITUATED IN THE SE 1/4 OF SEC. 22 AND THE NE 1/4 OF SEC. 27, T 6 S., R 9 W., COLON TWP., ST. JOSEPH COUNTY, MICHIGAN



Wayne A. Mstrom
EAST 1/4 COR. SEC. 27
T 6 S., R 9 W.
JOB NO 2347



LEGEND

1. ALL DIMENSIONS ARE IN FEET.
2. ALL CURVE DIMENSIONS ARE ARCS.
3. CONCRETE MONUMENTS HAVE BEEN PLACED AT ALL POINTS MARKED "O".
4. LOT CORNERS HAVE BEEN MARKED WITH 1/2 INCH IRON BARS 18 INCHES IN LENGTH.
5. BEARINGS WERE ESTABLISHED FROM THE RECORDED PLAT OF "WALTER'S GROVE", (L - 3, P - 91).

THIS PLAT IS SUBJECT TO RESTRICTIONS AS REQUIRED BY ACT 288 OF 1967, AS AMENDED ON CERTAIN LOTS WITH RESPECT TO THE REQUIREMENTS OF THE MICHIGAN DEPARTMENT OF NATURAL RESOURCES AND/OR THE MICHIGAN DEPARTMENT OF PUBLIC HEALTH, WHICH ARE RECORDED IN LIBER PAGE OF RECORDS OF THIS COUNTY.