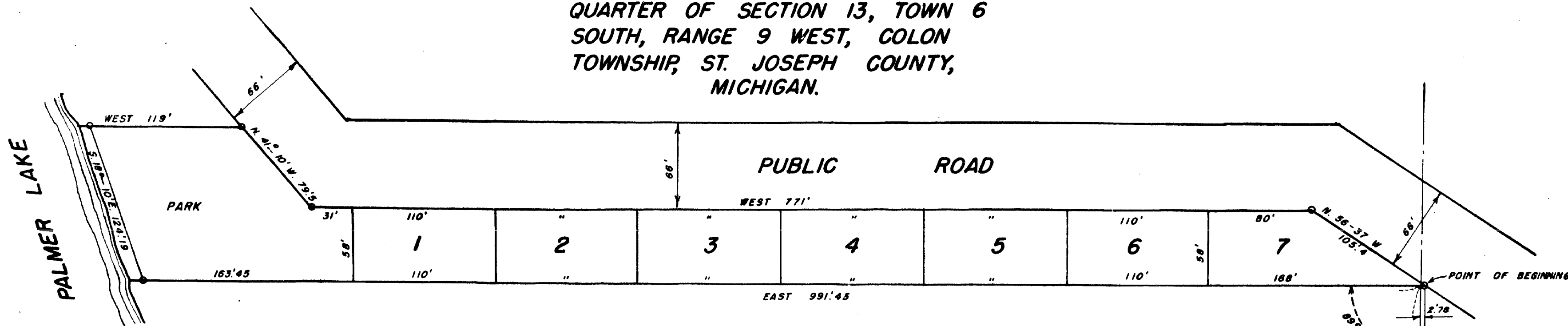


# SUPERVISOR'S PLAT OF COLON TOWNSHIP PARK AND BEACH

A SUBDIVISION IN THE SOUTHWEST FRACTIONAL  
QUARTER OF SECTION 13, TOWN 6  
SOUTH, RANGE 9 WEST, COLON  
TOWNSHIP, ST. JOSEPH COUNTY,  
MICHIGAN.



### DEDICATION:

KNOW ALL MEN BY THESE PRESENTS, THAT I, EARL WARE, SUPERVISOR OF COLON TOWNSHIP, ST. JOSEPH COUNTY STATE OF MICHIGAN, BY VIRTUE OF AUTHORITY IN ME VESTED BY SECTION 81, ACT 172 OF 1929, HAVING BEEN DULY AUTHORIZED BY THE TOWNSHIP BOARD, HAVE CAUSED THE LAND DESCRIBED IN THE ANNEXED PLAT TO BE SURVEYED, LAID OUT AND PLATTED, TO BE KNOWN AS SUPERVISOR'S PLAT OF COLON TOWNSHIP PARK AND BEACH, A SUBDIVISION IN THE SOUTHWEST FRACTIONAL QUARTER OF SECTION 13, TOWN 6 SOUTH, RANGE 9 WEST, COLON TOWNSHIP, ST. JOSEPH COUNTY, MICHIGAN, AND THAT THE PARK ON SAID PLAT IS NOW BEING USED FOR THAT PURPOSE. SIDE LINES OF PARK EXTEND TO WATERS EDGE.

Nora M. Ware  
NORA M. WARE  
Robert Sayers  
ROBERT SAYERS

Earl Ware (SEAL)  
EARL WARE  
SUPERVISOR OF COLON  
TOWNSHIP.

### DESCRIPTION:

THE SUPERVISOR'S PLAT OF COLON TOWNSHIP PARK AND BEACH, A SUBDIVISION IN THE SOUTHWEST FRACTIONAL QUARTER OF SECTION 13, TOWN 6 SOUTH, RANGE 9 WEST, COLON TOWNSHIP, ST. JOSEPH COUNTY, MICHIGAN, IS AS FOLLOWS: BEGINNING AT A POINT FOUND BY STARTING AT THE SOUTHEAST CORNER OF THE WEST FRACTIONAL HALF OF THE SOUTHWEST FRACTIONAL QUARTER OF SAID SECTION AND RUNNING NORTH 1 DEGREE EAST ON THE EIGHTH LINE 1201.25 FEET, THENCE EAST 2.78 FEET TO THE POINT OF BEGINNING OF THIS SUBDIVISION, THENCE NORTH 56 DEGREES 37 MINUTES WEST 105.4 FEET, THENCE WEST 771 FEET, THENCE NORTH 41 DEGREES 10 MINUTES WEST 79.5 FEET, THENCE WEST 119 FEET TO THE EDGE OF PALMER LAKE, THENCE SOUTH 18 DEGREES 10 MINUTES EAST 124.19 FEET ALONG SAID LAKE, THENCE EAST 991.45 FEET TO BEGINNING.

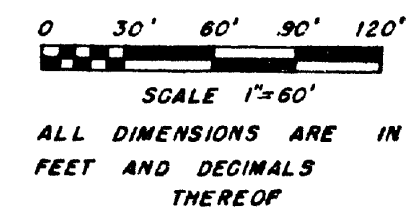
I HEREBY CERTIFY THAT THIS COPY IS A TRUE COPY OF THE MAP OR PLAT FORWARDED THE REGISTER OF DEEDS FOR RECORDING.

Examined and Approved

COMPARED  
Mayme Jewell Purdy  
DEPUTY AUDITOR GENERAL  
Mayme Jewell Purdy  
FILED IN AUDITOR GENERAL'S DEPT.

Mayme Jewell Purdy  
DEPUTY AUDITOR GENERAL  
Mayme Jewell Purdy

SE. CORNER OF  
WFR. 1/2 SWFR 1/4  
SEC. 13, T. 6 S., R. 9 W.  
SECTION LINE



STATE OF MICHIGAN SS  
COUNTY OF ST. JOSEPH

ON THIS 17 DAY OF July, A.D. 1950, BEFORE ME, A NOTARY PUBLIC IN AND FOR SAID COUNTY, PERSONALLY CAME THE ABOVE NAMED EARL WARE, SUPERVISOR OF COLON TOWNSHIP, KNOW TO ME TO BE THE PERSON WHO EXECUTED THE ABOVE DEDICATION AND ACKNOWLEDGED THE SAME TO BE HIS FREE ACT AND DEED, AS SUCH SUPERVISOR

Faye Williams  
FAYE WILLIAMS  
NOTARY PUBLIC IN AND FOR  
ST. JOSEPH COUNTY  
MY COMMISSION EXPIRES  
12-10-51

COPY  
Register's Office  
County } ss.  
Plat of \_\_\_\_\_  
was Recorded this \_\_\_\_\_ day of \_\_\_\_\_  
A.D. 19\_\_\_\_ at \_\_\_\_\_ O'clock  
M. in Liber \_\_\_\_\_ of \_\_\_\_\_  
on Page \_\_\_\_\_  
Register of Deeds

### CERTIFICATE OF MUNICIPAL APPROVAL:

THIS PLAT WAS APPROVED BY THE TOWNSHIP BOARD OF THE TOWNSHIP OF COLON AT A MEETING HELD JULY 3, 1950.

Charles E. Williams  
CHARLES E. WILLIAMS, CLERK

### SURVEYOR'S CERTIFICATE:

I HEREBY CERTIFY THAT THE PLAT HEREON DELINEATED IS A CORRECT ONE AND THAT PERMANENT METAL MONUMENTS CONSISTING OF BARS NOT LESS THAN ONE-HALF INCH IN DIAMETER AND 48 INCHES IN LENGTH ENCASED IN A CONCRETE CYLINDER AT LEAST 4 INCHES IN DIAMETER AND 48 INCHES IN DEPTH HAVE BEEN PLACED AT ALL POINTS MARKED THUS: O AS SHOWN AT ALL ANGLES IN THE BOUNDARIES OF THE LAND PLATTED, AT ALL INTERSECTIONS OF STREETS, AND AT INTERSECTIONS OF STREETS WITH THE BOUNDARIES OF THE PLAT AS SHOWN ON SAID PLAT.

Thomas Albert Smith  
THOMAS ALBERT SMITH,  
REGISTERED LAND SURVEYOR.

### CERTIFICATE OF APPROVAL BY COUNTY PLAT BOARD:

THIS PLAT WAS APPROVED ON THE 20 DAY OF July, 1950.

Marion E. Anderson  
MARION E. ANDERSON, REGISTER OF DEEDS.  
John W. Mervin  
JOHN W. MERVIN, COUNTY CLERK.  
Eva M. Brumbaugh  
EVA M. BRUMBAUGH, COUNTY TREASURER.

### CERTIFICATE OF APPROVAL BY BOARD OF COUNTY ROAD COMMISSIONERS:

THIS PLAT HAS BEEN EXAMINED AND WAS APPROVED ON THE 20 DAY OF July, 1950 BY THE ST. JOSEPH COUNTY BOARD OF ROAD COMMISSIONERS.

A. L. Hibbard  
A. L. HIBBARD, CHAIRMAN.  
Ivan Bent  
IVAN BENT, MEMBER.  
Paul Ahlgrim  
PAUL AHLGRIM, MEMBER.