

Examined and Approved
Sept 5-1922
Geo. L. Hurvel
 Deputy Auditor General

PLAT of PINE GROVE

Colon Township, St. Joseph County, Michigan

DESCRIPTION

The plat of Pine Grove, Colon Township, St. Joseph County, Michigan, begins 798.6 feet east from the northeast corner of the northwest 1/4 of the northwest 1/4 of section 24 in Township 6 south of range 9 west St. Joseph County, Michigan, and running thence west 715 feet, thence south 4° 7' west 700 feet, thence south 14° 32' east 113.25 feet, thence north 83° 23' east 221 feet, thence north 4° 7' east 764 feet, thence east 466.4 feet, thence north 20 feet to the place of beginning.

SURVEYOR'S CERTIFICATE

I hereby certify that the plat hereon delineated is a correct one and that permanent monuments consisting of gas-pipe 1 inch in diameter by 24 inches long have been placed at all points marked (O) as thereon shown at all intersections of lot-lines streets and alleys.

Geo. A. Eagleton
 Registered Civil Engineer.

CERTIFICATE OF APPROVAL BY TOWNSHIP BOARD

This plat was approved by the Township Board of Colon Township, St. Joseph County Michigan, at a meeting held on the 14th day of August, 1922.

Lawrence H. Niendorf ----- Clerk.

CERTIFICATE OF APPROVAL BY COUNTY BOARD

This plat was approved on the 15th day of August 1922.

William T. Langley ----- Judge of Probate.

Edward E. Harwood ----- County Clerk.

A. Beerstecher ----- County Treasurer.

COUNTY TREASURER'S CERTIFICATE RELATING TO TAXES

Office of County Treasurer, St. Joseph County, Michigan.

I hereby certify that there are no tax-liens or titles held by the State on the lands described below, and that there are no tax-liens or titles held by individuals on said lands for the five years preceding the 15th day of August, 1922, and that the taxes for said period of five years are paid as shown by the records of this office.

DESCRIPTION - Beginning 798.6 feet east from the northeast corner of the northwest 1/4 of the northwest 1/4 of section 24 in Township 6, south of range 9 west, St. Joseph County, Michigan, and running thence west 715 feet, thence south 4° 7' west 700 feet, thence south 14° 32' east 113.25 feet, thence north 83° 23' east 221 feet, thence north 4° 7' east 764 feet, thence east 466.4 feet, thence north 20 feet to the place of beginning.

A. Beerstecher ----- County Treasurer.

DEDICATION

KNOW ALL MEN BY THESE PRESENTS:

That we FRANK B. DEIHL, as proprietor, and LIZZIE M. DEIHL his wife, have caused the land embraced in the annexed plat to be surveyed, laid out, and platted to be known as PINE GROVE, Colon Township, St. Joseph County, Michigan, and that the streets and alleys as shown on said plat are hereby dedicated to the use of the public.

Signed and sealed in presence of:

EVA I. HILL

FRANK B. DEIHL ----- L.S.

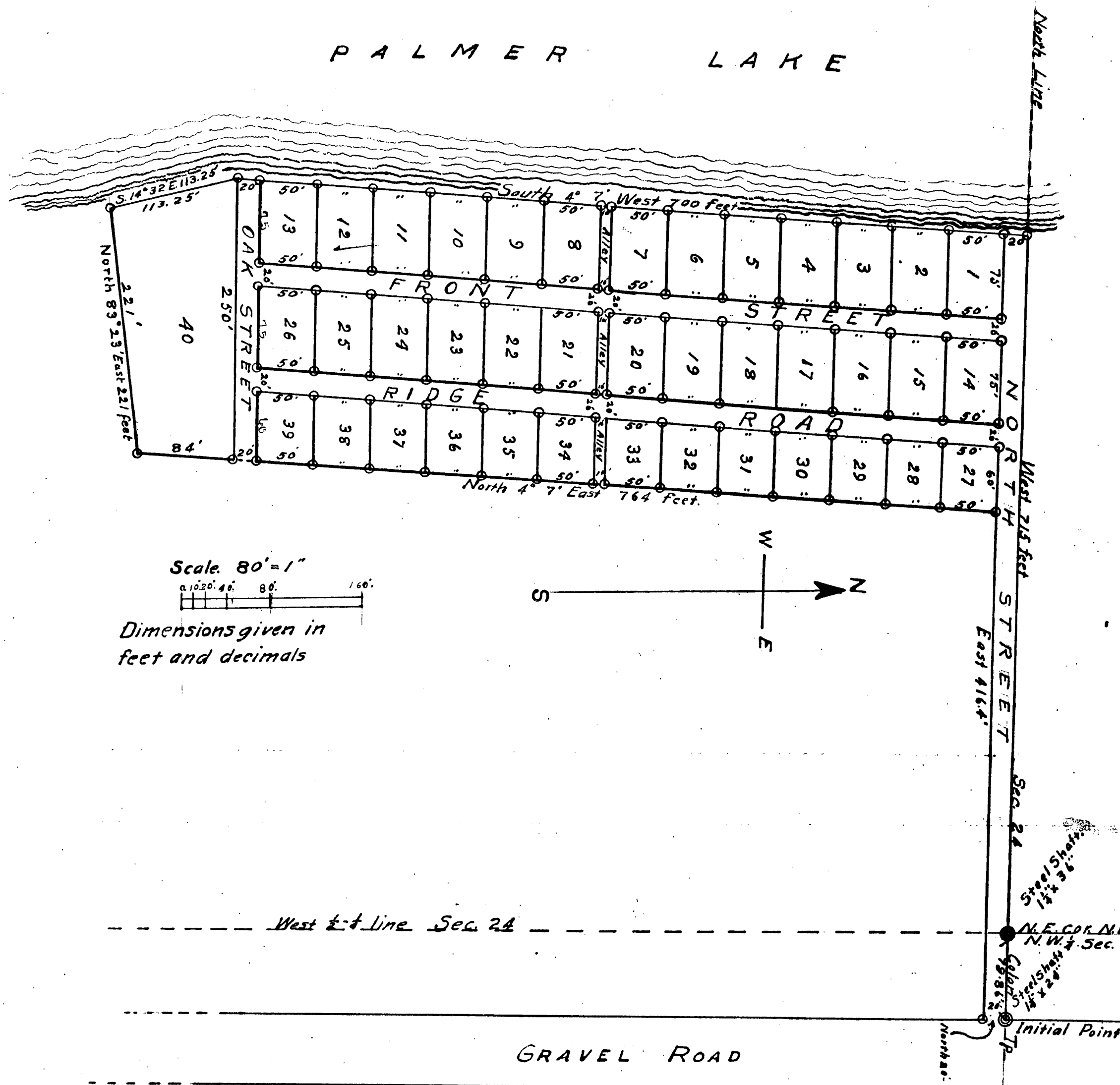
Edwin J. Hill

LIZZIE M. DEIHL ----- L.S.

STATE OF MICHIGAN, } ss.
 County of St. Joseph. }

On this 12th day of August, 1922, before me JOHN A. KARCHNER, a Notary Public in and for said county, personally came the above named FRANK B. DEIHL, and LIZZIE M. DEIHL his wife, known to me to be the persons who executed the above dedication and acknowledged the same to be their free act and deed.

JOHN A. KARCHNER
 Notary Public, St. Joseph County, Michigan
 My commission expires November 21st, 1925



Register's Office }
 St. Joseph County. }
 Plat of Pine Grove
 this document this day of Sept 11, 1922 at 11 o'clock
 a one of Plat
 Arthur E. Howard
 Register of Deeds.
 I HEREBY CERTIFY THAT THIS COPY IS A TRUE COPY OF THE MAP OR PLAT FORWARDED THE REGISTER OF DEEDS FOR RECORD.
 COMPARED *Sept 5-1922*
Geo. L. Hurvel
 DEPUTY AUDITOR GENERAL.
 FILED IN AUDITOR GENERAL'S DEPT. *Sept 28-1922*
Geo. L. Hurvel
 DEPUTY AUDITOR GENERAL.