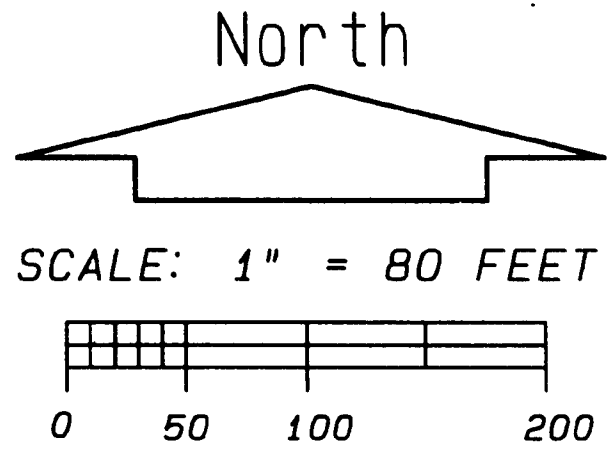


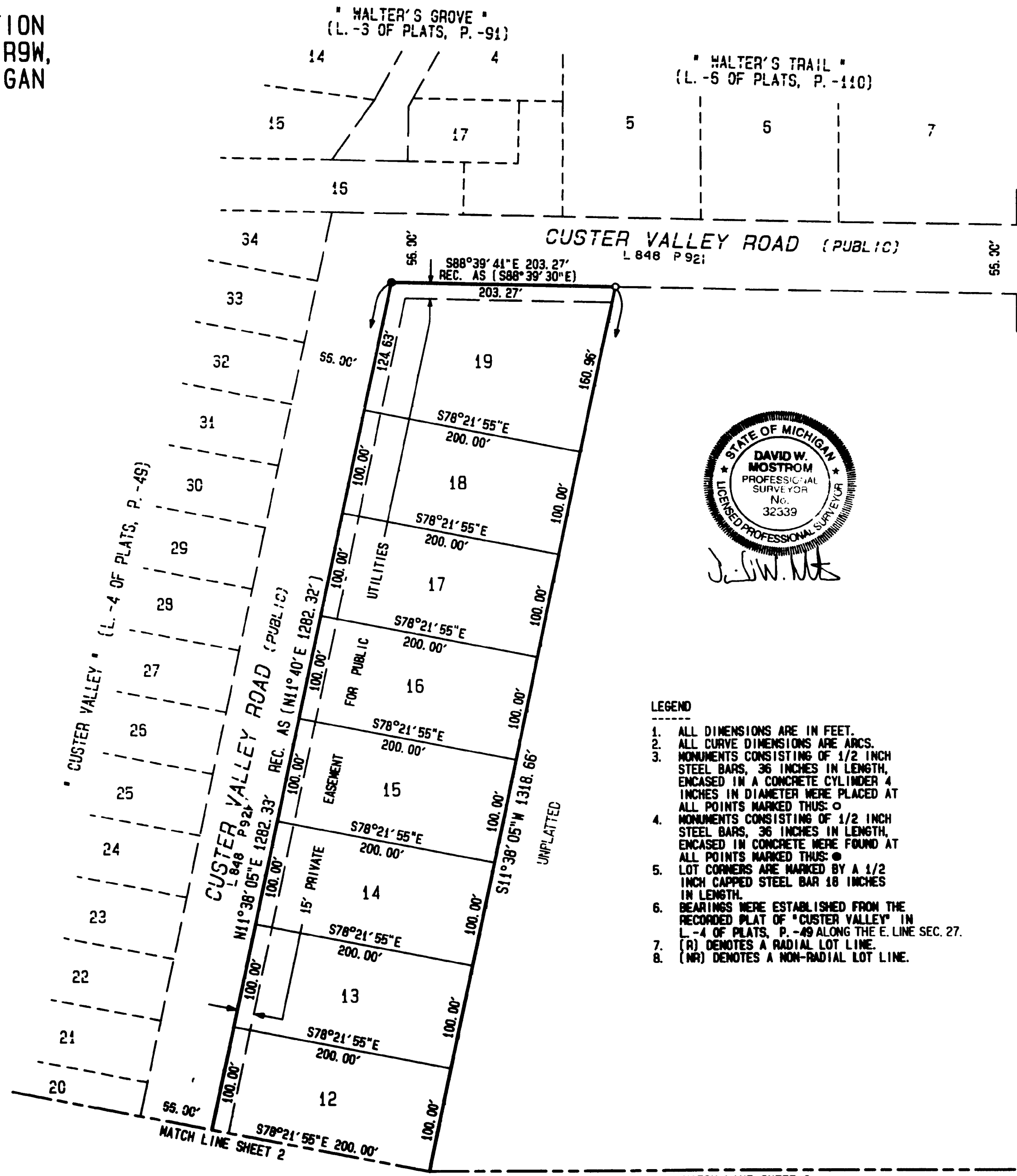
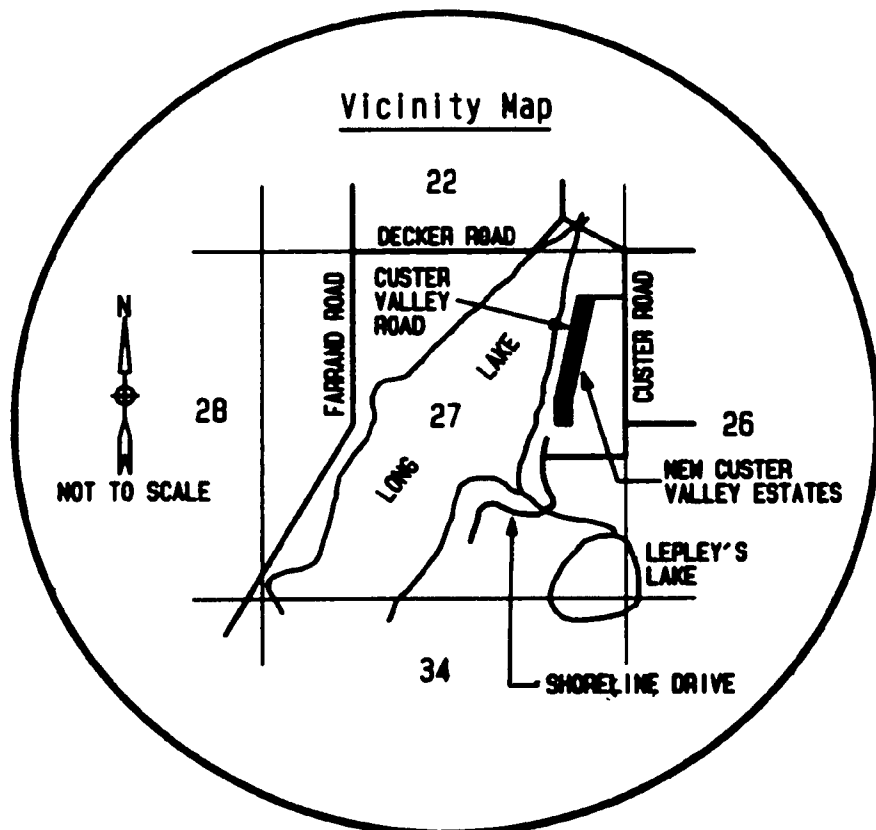
NEW CUSTER VALLEY ESTATES

A SUBDIVISION SITUATED IN THE EAST FRACTION OF THE NORTHEAST 1/4 OF SECTION 27, T6S, R9W, COLON TOWNSHIP, ST. JOSEPH COUNTY, MICHIGAN

EXAMINED AND APPROVED
 DATE Aug. 26, 1998
 BY DEPARTMENT OF CONSUMER AND INDUSTRY SERVICES
 BY Waymond R. Dyer
 MAYNARD R. DYER, P.S.
 MANAGER
 SUBDIVISION CONTROL UNIT



THIS PLAT IS SUBJECT TO RESTRICTIONS AS REQUIRED BY ACT 288 OF 1967, AS AMENDED ON CERTAIN LOTS WITH RESPECT TO THE REQUIREMENTS OF THE MICHIGAN DEPARTMENT OF ENVIRONMENTAL QUALITY, WHICH ARE RECORDED IN LIBER 857, PAGES 31-34 OF RECORDS OF THIS COUNTY.

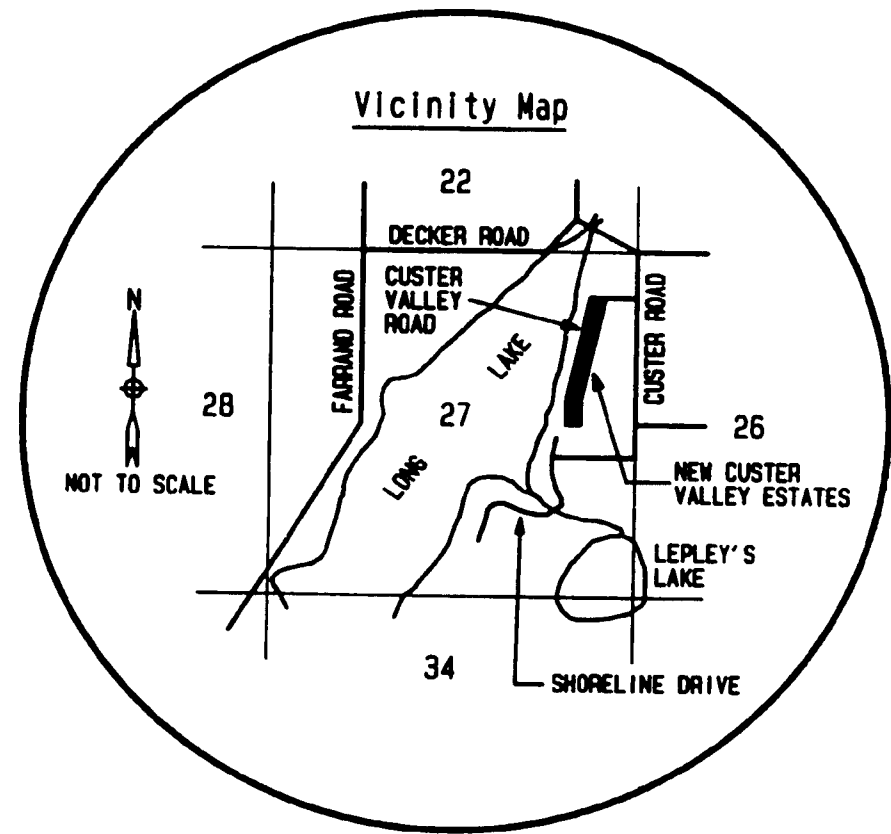


- LEGEND
1. ALL DIMENSIONS ARE IN FEET.
 2. ALL CURVE DIMENSIONS ARE ARCS.
 3. MONUMENTS CONSISTING OF 1/2 INCH STEEL BARS, 36 INCHES IN LENGTH, ENCASED IN A CONCRETE CYLINDER 4 INCHES IN DIAMETER WERE PLACED AT ALL POINTS MARKED THUS: ○
 4. MONUMENTS CONSISTING OF 1/2 INCH STEEL BARS, 36 INCHES IN LENGTH, ENCASED IN CONCRETE WERE FOUND AT ALL POINTS MARKED THUS: ●
 5. LOT CORNERS ARE MARKED BY A 1/2 INCH CAPPED STEEL BAR 18 INCHES IN LENGTH.
 6. BEARINGS WERE ESTABLISHED FROM THE RECORDED PLAT OF "CUSTER VALLEY" IN L.-4 OF PLATS, P. -49 ALONG THE E. LINE SEC. 27.
 7. (R) DENOTES A RADIAL LOT LINE.
 8. (NR) DENOTES A NON-RADIAL LOT LINE.

CUSTER ROAD (PUBLIC)
 500°02'29"W 2669.70'

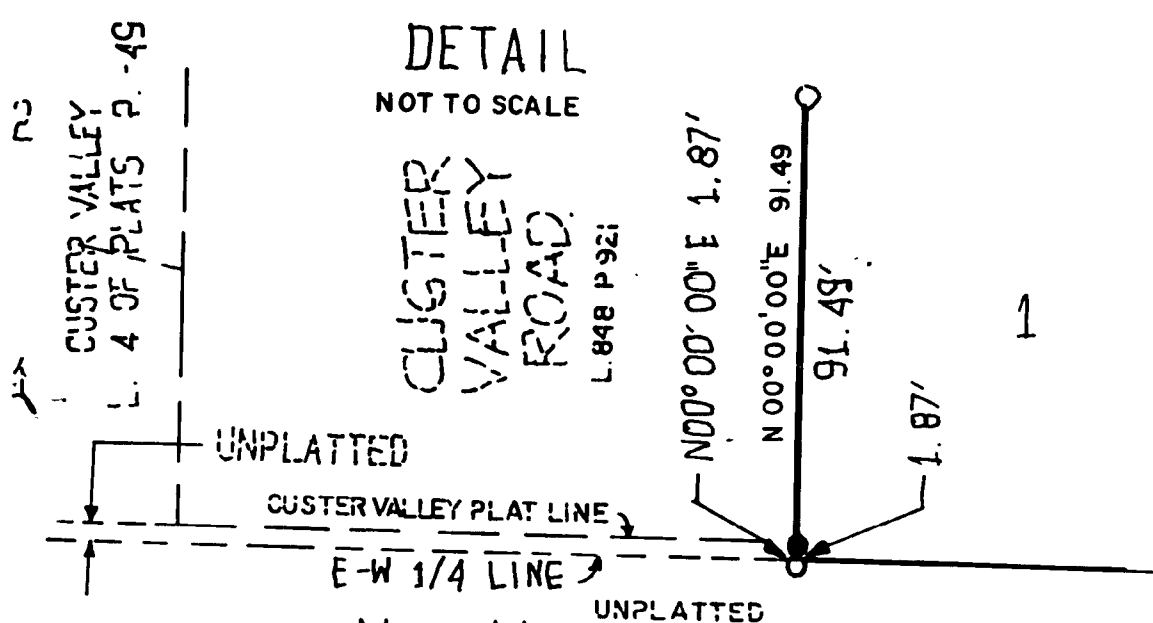
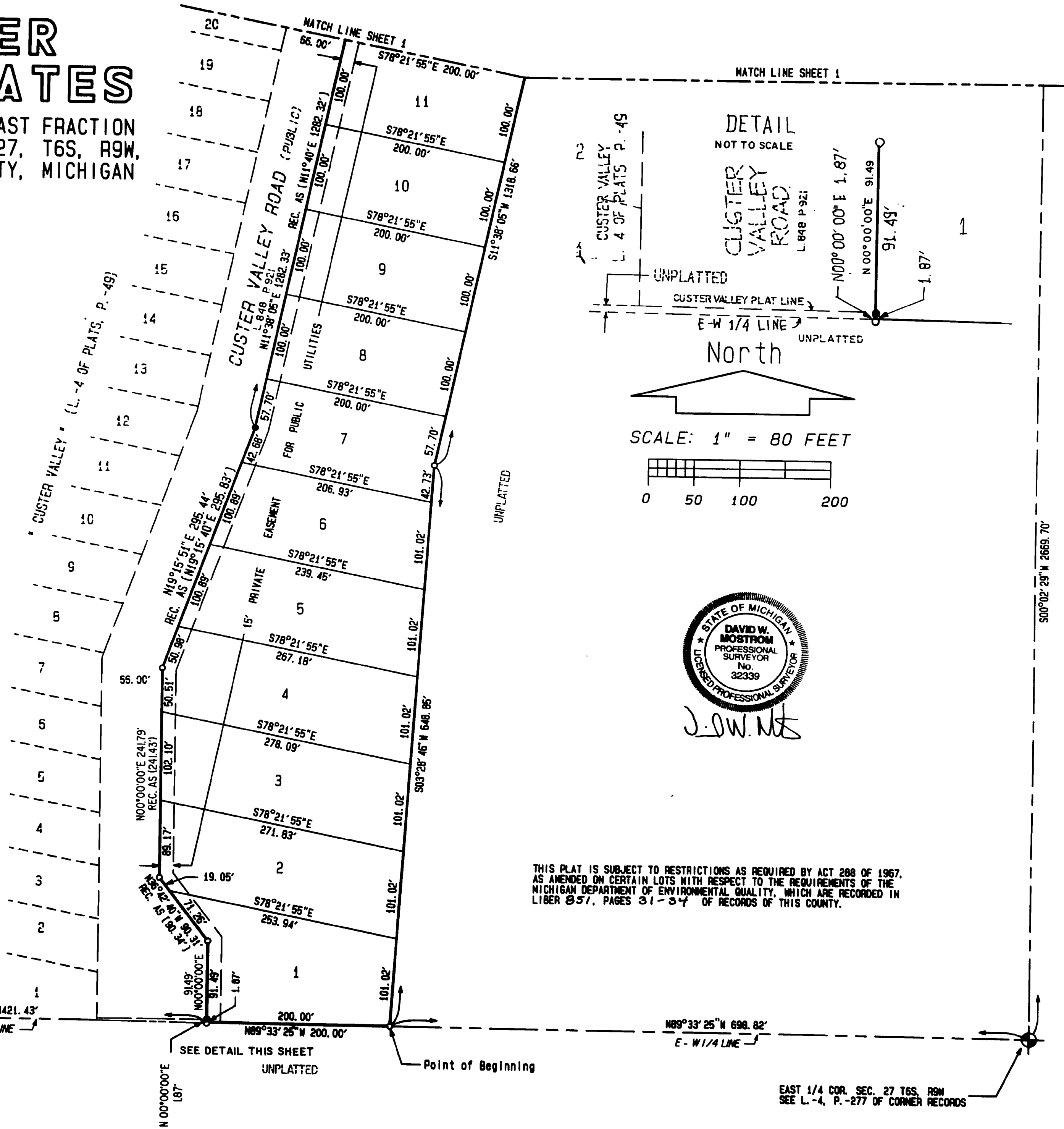
NEW CUSTER VALLEY ESTATES

A SUBDIVISION SITUATED IN THE EAST FRACTION OF THE NORTHEAST 1/4 OF SECTION 27, T6S, R9W, COLON TOWNSHIP, ST. JOSEPH COUNTY, MICHIGAN



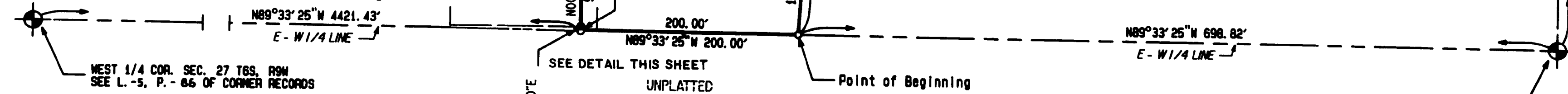
LEGEND

1. ALL DIMENSIONS ARE IN FEET.
2. ALL CURVE DIMENSIONS ARE ARCS.
3. MONUMENTS CONSISTING OF 1/2 INCH STEEL BARS, 36 INCHES IN LENGTH, ENCASED IN A CONCRETE CYLINDER 4 INCHES IN DIAMETER WERE PLACED AT ALL POINTS MARKED THIS: ○
4. MONUMENTS CONSISTING OF 1/2 INCH STEEL BARS, 36 INCHES IN LENGTH, ENCASED IN CONCRETE WERE FOUND AT ALL POINTS MARKED THIS: ●
5. LOT CORNERS ARE MARKED BY A 1/2 INCH CAPPED STEEL BAR 18 INCHES IN LENGTH.
6. BEARINGS WERE ESTABLISHED FROM THE RECORDED PLAT OF "CUSTER VALLEY" IN L-4 OF PLATS, P.-49 ALONG THE E. LINE SEC. 27.
7. (R) DENOTES A RADIAL LOT LINE.
8. (NR) DENOTES A NON-RADIAL LOT LINE.



J.W. Nts

THIS PLAT IS SUBJECT TO RESTRICTIONS AS REQUIRED BY ACT 288 OF 1967, AS AMENDED ON CERTAIN LOTS WITH RESPECT TO THE REQUIREMENTS OF THE MICHIGAN DEPARTMENT OF ENVIRONMENTAL QUALITY, WHICH ARE RECORDED IN LIBER 857, PAGES 31-34 OF RECORDS OF THIS COUNTY.



NEW CUSTER VALLEY ESTATES

A SUBDIVISION SITUATED IN THE EAST FRACTION OF THE NORTHEAST 1/4 OF SECTION 27,
T6S, R9W, COLON TOWNSHIP, ST. JOSEPH COUNTY, MICHIGAN

SURVEYOR'S CERTIFICATE

I, DAVID W. MOSTROM, SURVEYOR, CERTIFY THAT I HAVE SURVEYED, DIVIDED AND MAPPED THE LAND SHOWN ON THIS PLAT, DESCRIBED AS FOLLOWS:

NEW CUSTER VALLEY ESTATES, A SUBDIVISION SITUATED IN THE EAST FRACTION OF THE NORTHEAST 1/4 OF SECTION 27, TOWNSHIP 6 SOUTH, RANGE 9 WEST, COLON TOWNSHIP, ST. JOSEPH COUNTY, MICHIGAN.

COMMENCING AT THE EAST 1/4 CORNER OF SAID SECTION 27 AND RUNNING THENCE NORTH 89°33'25" WEST, ALONG THE EAST-WEST 1/4 LINE, 698.82 FEET TO THE POINT OF BEGINNING OF THIS DESCRIPTION; THE BOUNDARY RUNS THENCE NORTH 89°33'25" WEST, ALONG THE EAST-WEST 1/4 LINE, 200 FEET; THENCE NORTH 00°00'00" EAST 1.87 FEET TO A CONCRETE MONUMENT FOUND AT THE SOUTHEAST CORNER OF THE RECORDED PLAT OF CUSTER VALLEY, ACCORDING TO THE PLAT OF RECORD IN THE OFFICE OF THE REGISTER OF DEEDS FOR ST. JOSEPH COUNTY, MICHIGAN IN LIBER 4 OF PLATS, PAGE 49; THENCE NORTHERLY, ALONG THE EASTERLY LINE OF CUSTER VALLEY ROAD AND THE RECORDED PLAT OF CUSTER VALLEY ALONG THE FOLLOWING 5 COURSES: NORTH 00°00'00" EAST 91.49 FEET, NORTH 36°42'40" WEST 90.31 FEET, NORTH 00°00'00" EAST 241.79 FEET, NORTH 19°15'51" EAST 295.44 FEET AND NORTH 11°38'05" EAST 1282.33 FEET; THENCE SOUTH 88°39'41" EAST, ALONG THE SOUTH LINE OF CUSTER VALLEY ROAD AND THE RECORDED PLAT OF CUSTER VALLEY, 203.27 FEET; THENCE SOUTH 11°38'05" WEST 1318.66 FEET; THENCE SOUTH 03°28'46" WEST 648.85 FEET TO THE POINT OF BEGINNING.

BEING PROPOSED LOTS 1 THRU 19, INCLUSIVE, NEW CUSTER VALLEY ESTATES

THIS PLAT CONTAINS 9.743 ACRES, MORE OR LESS.

THIS PLAT CONTAINS 19 NUMBERED LOTS.

THAT I HAVE MADE SUCH SURVEY, LAND DIVISION AND PLAT BY THE DIRECTION OF THE OWNERS OF SUCH LAND.

THAT SUCH PLAT IS A CORRECT REPRESENTATION OF ALL THE EXTERIOR BOUNDARIES OF THE LAND SURVEYED AND THE SUBDIVISION OF IT.

THAT THE REQUIRED MONUMENTS AND LOT MARKERS HAVE BEEN LOCATED IN THE GROUND OR THAT SURETY HAS BEEN DEPOSITED WITH THE MUNICIPALITY, AS REQUIRED BY SECTION 125 OF THE ACT.

THAT THE ACCURACY OF SURVEY IS WITHIN THE LIMITS REQUIRED BY SECTION 126 OF THE ACT.

THAT THE BEARINGS SHOWN ON THE PLAT ARE EXPRESSED AS REQUIRED BY SECTION 126(3) OF THE ACT AND AS EXPLAINED IN THE LEGEND.

DATE June 26, 1998



D.W. Mostrom
DAVID W. MOSTROM, P.S. 32339
VICE-PRESIDENT OF MOSTROM & ASSOC., INC.
610 M. BURR OAK ST.
CENTREVILLE, MI 49032

PROPRIETOR'S CERTIFICATE

WE, AS PROPRIETORS, CERTIFY THAT WE CAUSED THE LAND EMBRACED IN THIS PLAT TO BE SURVEYED, DIVIDED, MAPPED AND DEDICATED AS REPRESENTED ON THIS PLAT; THAT THE PUBLIC UTILITY EASEMENTS ARE PRIVATE EASEMENTS AND THAT ALL OTHER EASEMENTS ARE FOR THE USES SHOWN ON THE PLAT.

Vicky J. Miller
VICKY J. MILLER, WITNESS

Lila Mostrom
LILA MOSTROM, WITNESS

Arthur L. Moyer
ARTHUR L. MOYER
60250 CUSTER VALLEY ROAD
COLON, MICHIGAN 49040

Donna J. Moyer
DONNA J. MOYER
60250 CUSTER VALLEY ROAD
COLON, MICHIGAN 49040

ACKNOWLEDGMENT

STATE OF MICHIGAN
SS
ST. JOSEPH COUNTY

PERSONALLY CAME BEFORE ME THIS 26th DAY OF June, 1998, THE ABOVE NAMED ARTHUR L. MOYER AND DONNA J. MOYER, HUSBAND AND WIFE, KNOWN TO ME TO BE THE PERSONS WHO EXECUTED THE FOREGOING INSTRUMENT AND ACKNOWLEDGED THAT THEY EXECUTED THE SAME AS THEIR FREE ACT AND DEED.

NOTARY PUBLIC Lila Mostrom ST. JOSEPH COUNTY, MICHIGAN
LILA MOSTROM ST. JOSEPH

MY COMMISSION EXPIRES Jan. 14, 2000

COUNTY TREASURER'S CERTIFICATE

THE RECORDS IN MY OFFICE SHOW NO UNPAID TAXES OR SPECIAL ASSESSMENTS FOR THE FIVE YEARS PRECEDING June 26, 1998, INVOLVING LANDS INCLUDED IN THIS PLAT.

Janet L. Beals
JANET L. BEALS, ST. JOSEPH COUNTY TREASURER

DRAIN COMMISSIONER'S CERTIFICATE

APPROVED ON June 29, 1998, AS COMPLYING WITH SECTION 192 OF ACT 288, P.A. 1967, AND THE APPLICABLE RULES AND REGULATIONS PUBLISHED BY MY OFFICE IN THE COUNTY OF ST. JOSEPH.

Maurice S. Kline
MAURICE S. KLINE, DRAIN COMMISSIONER

CERTIFICATE OF ROAD COMMISSIONERS

APPROVED ON July 1, 1998, AS COMPLYING WITH SECTION 183 OF ACT 288, P.A. 1967, AND THE APPLICABLE PUBLISHED RULES AND REGULATIONS OF THE BOARD OF ROAD COMMISSIONERS OF ST. JOSEPH COUNTY.

Mason C. Meyer
MASON C. MEYER, CHAIRMAN

Chester M. Dobrowolski
CHESTER M. DOBROWOLSKI, MEMBER

Robert J. Spillar
ROBERT J. SPILLAR, MEMBER

CERTIFICATE OF MUNICIPAL APPROVAL

I CERTIFY THAT THIS PLAT WAS APPROVED BY THE TOWNSHIP BOARD OF THE TOWNSHIP OF COLON AT A MEETING HELD July 9, 1998, AND WAS REVIEWED AND FOUND TO BE IN COMPLIANCE WITH ACT 288, P.A. 1967. PRELIMINARY PLAT WAS APPROVED ON March 10, 1998, BY THE ST. JOSEPH COUNTY HEALTH DEPARTMENT.

Marilyn L. Farrell
MARILYN L. FARRELL, CLERK

COUNTY PLAT BOARD CERTIFICATE

THIS PLAT HAS BEEN REVIEWED AND IS APPROVED BY THE ST. JOSEPH COUNTY PLAT BOARD ON July 12, 1998 AND BEING IN COMPLIANCE WITH ALL OF THE PROVISIONS OF ACT 288, P.A. 1967, AND THE PLAT BOARD'S APPLICABLE RULES AND REGULATIONS.

Cynthia L. Jarratt
CYNTHIA L. JARRATT
REGISTER OF DEEDS

Janet L. Beals
JANET L. BEALS
COUNTY TREASURER

Pattie S. Bender
PATTIE S. BENDER
COUNTY CLERK

RECORDING CERTIFICATE

STATE OF MICHIGAN
ST. JOSEPH COUNTY

THIS PLAT WAS RECEIVED FOR RECORD ON THE 28th DAY OF August, 1998, AT 4:53 P.M. AND RECORDED IN LIBER 6 OF PLATS, ON PAGE(S) 172-174

Cynthia L. Jarratt
CYNTHIA L. JARRATT
REGISTER OF DEEDS