

# ASSESSOR'S PLAT OF THE TRUE JOHN MOWRY ESTATE

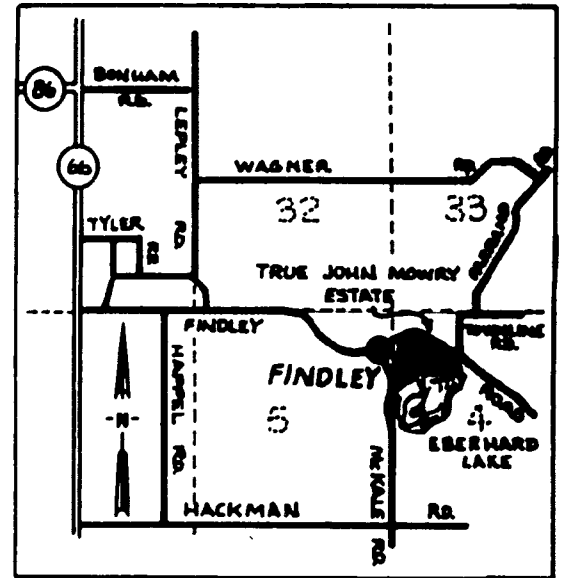
SITUATED IN THE NW FR'L. 1/4 OF SECTION 4, T7S, R9W,  
BURR OAK TOWNSHIP, ST. JOSEPH COUNTY, MICHIGAN

NW CORNER SECTION 4,  
T7S, R9W, MICHIGAN.

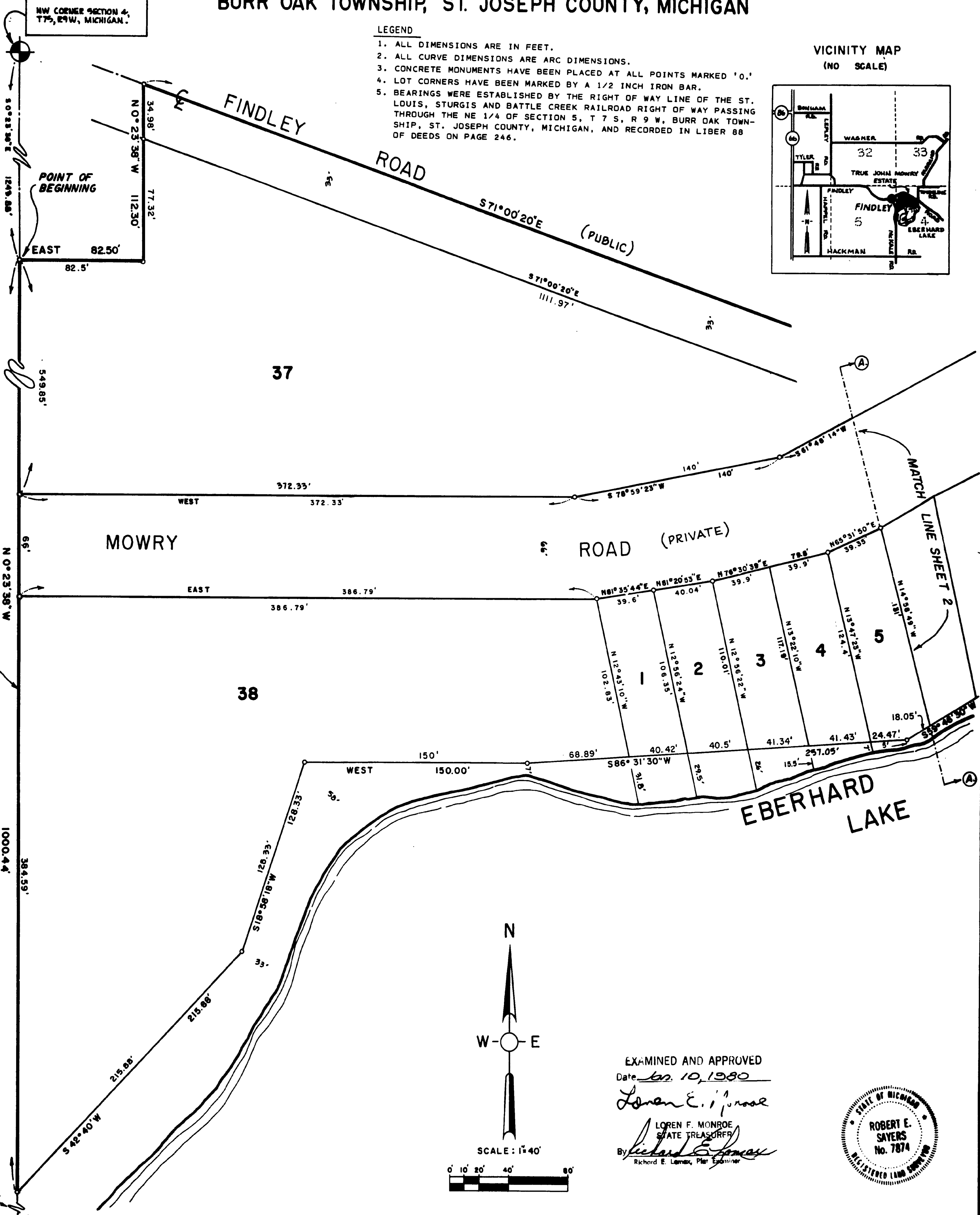
### LEGEND

1. ALL DIMENSIONS ARE IN FEET.
2. ALL CURVE DIMENSIONS ARE ARC DIMENSIONS.
3. CONCRETE MONUMENTS HAVE BEEN PLACED AT ALL POINTS MARKED 'O.'
4. LOT CORNERS HAVE BEEN MARKED BY A 1/2 INCH IRON BAR.
5. BEARINGS WERE ESTABLISHED BY THE RIGHT OF WAY LINE OF THE ST. LOUIS, STURGIS AND BATTLE CREEK RAILROAD RIGHT OF WAY PASSING THROUGH THE NE 1/4 OF SECTION 5, T 7 S, R 9 W, BURR OAK TOWNSHIP, ST. JOSEPH COUNTY, MICHIGAN, AND RECORDED IN LIBER 88 OF DEEDS ON PAGE 246.

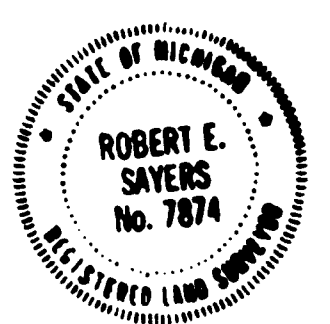
### VICINITY MAP (NO SCALE)



See Amended Plat RE: Lots 32+33 4/3/97 Liber 6 Plats Page 1167 See Judgment Liber 785 Page 903



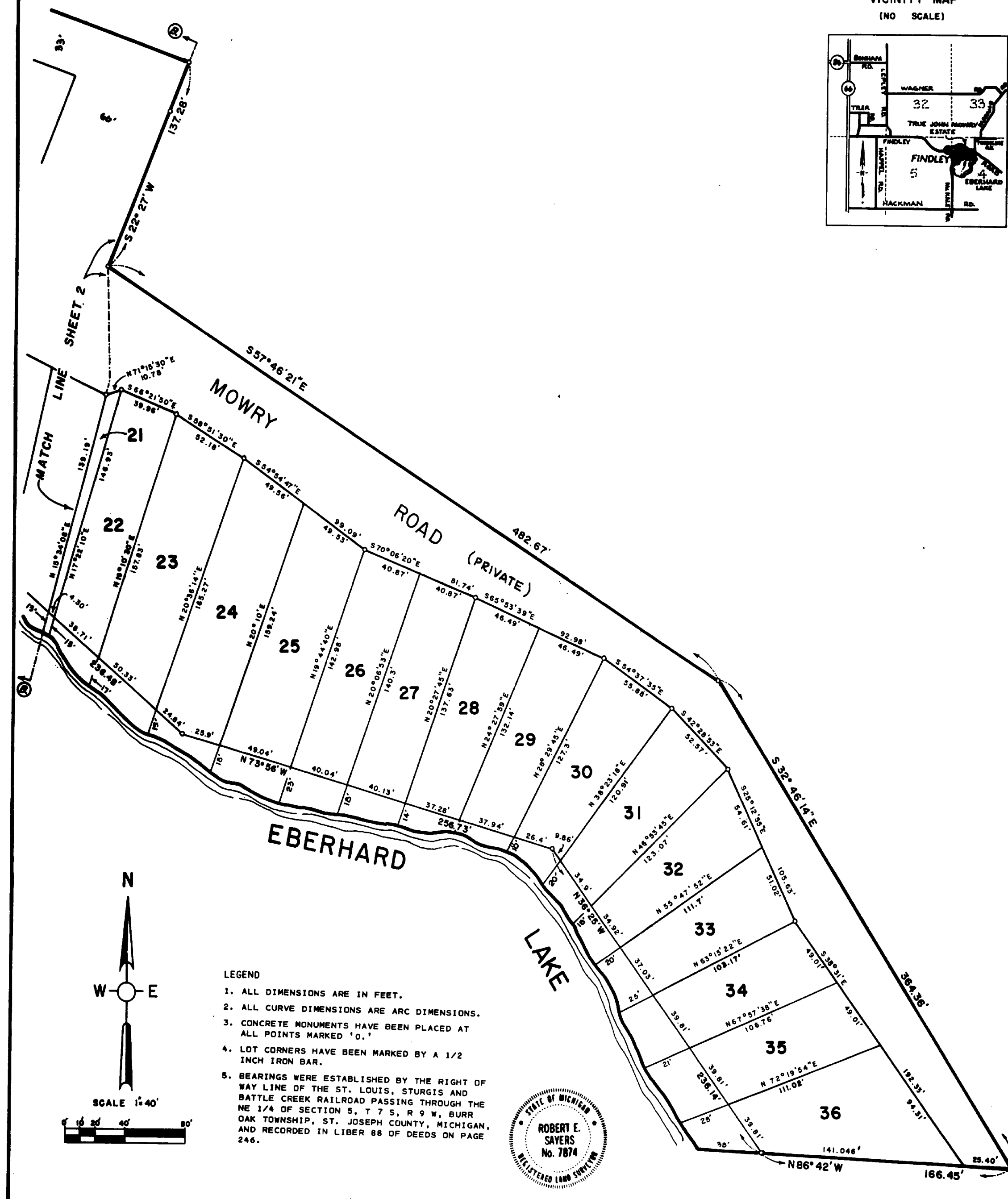
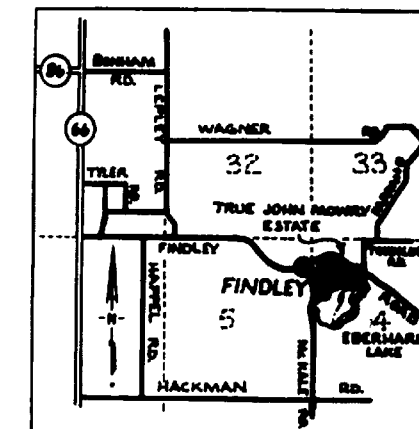
EXAMINED AND APPROVED  
 Date Jan. 10, 1980  
*Loren F. Monroe*  
 LOREN F. MONROE  
 STATE TREASURER  
 By *Richard E. Lamm*  
 Richard E. Lamm, Plat Examiner



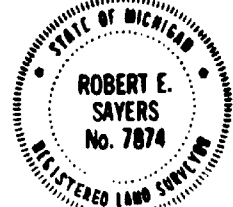
# ASSESSOR'S PLAT OF THE TRUE JOHN MOWRY ESTATE

SITUATED IN THE NW FR'L. 1/4 OF SECTION 4, T7S, R9W,  
BURR OAK TOWNSHIP, ST. JOSEPH COUNTY, MICHIGAN

VICINITY MAP  
(NO SCALE)



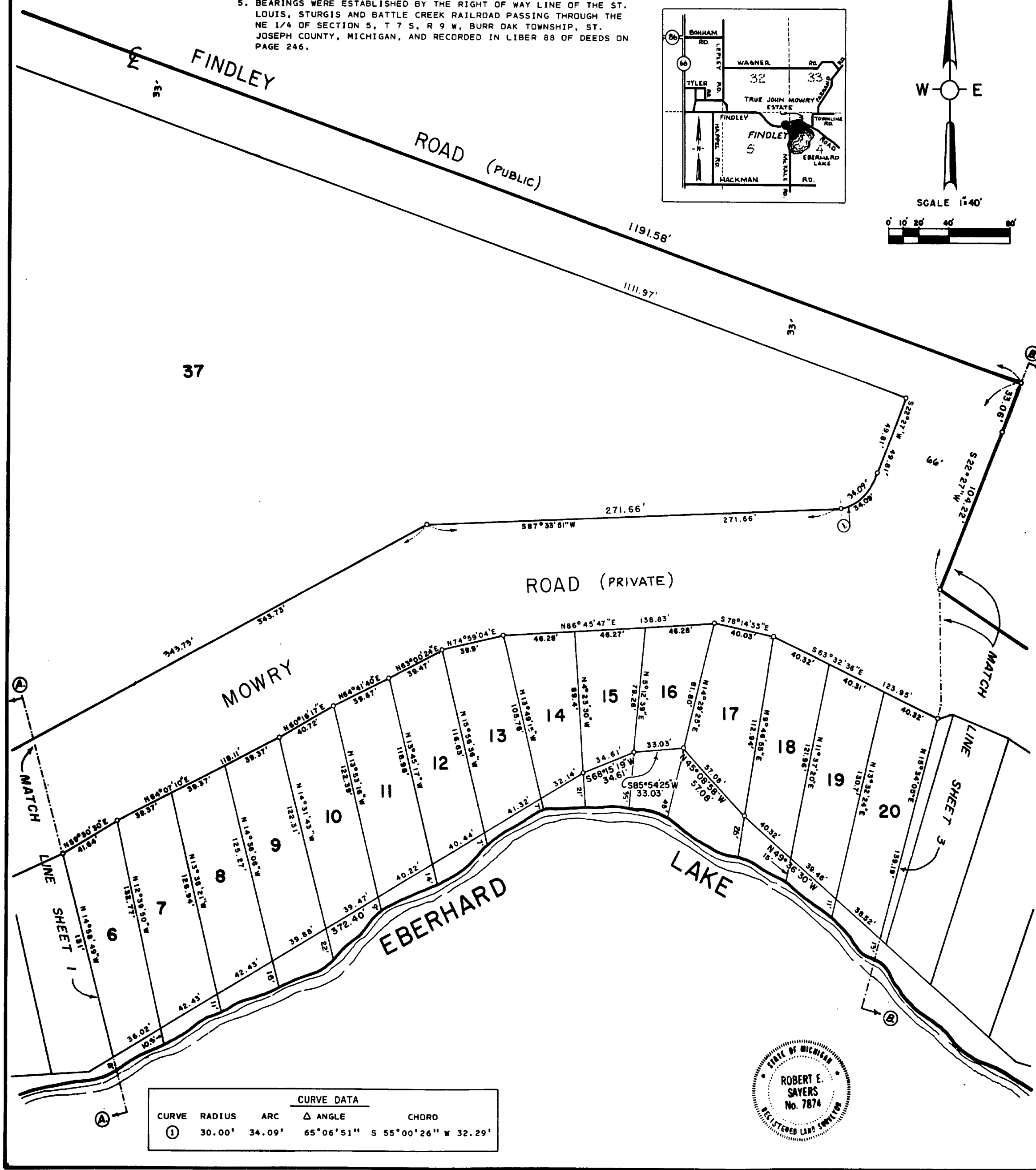
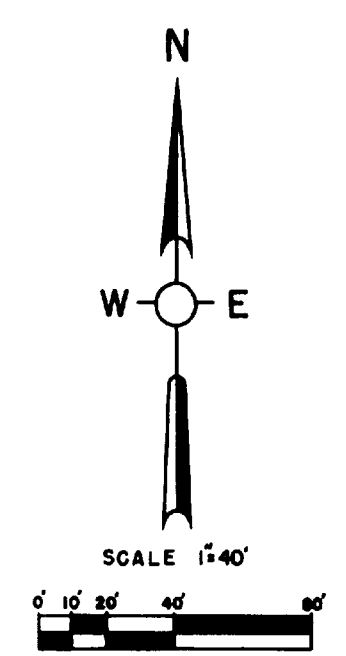
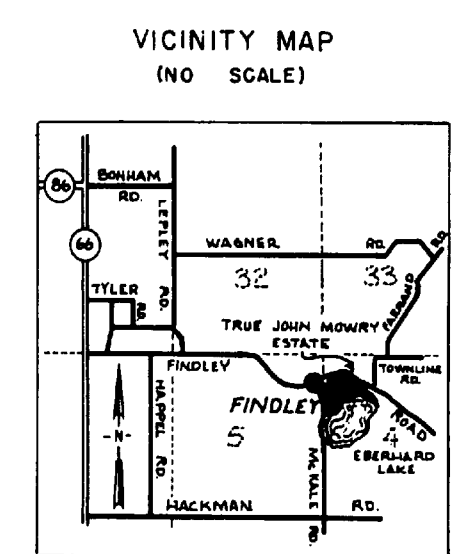
- LEGEND
1. ALL DIMENSIONS ARE IN FEET.
  2. ALL CURVE DIMENSIONS ARE ARC DIMENSIONS.
  3. CONCRETE MONUMENTS HAVE BEEN PLACED AT ALL POINTS MARKED 'O.'
  4. LOT CORNERS HAVE BEEN MARKED BY A 1/2 INCH IRON BAR.
  5. BEARINGS WERE ESTABLISHED BY THE RIGHT OF WAY LINE OF THE ST. LOUIS, STURGIS AND BATTLE CREEK RAILROAD PASSING THROUGH THE NE 1/4 OF SECTION 5, T 7 S, R 9 W, BURR OAK TOWNSHIP, ST. JOSEPH COUNTY, MICHIGAN, AND RECORDED IN LIBER 88 OF DEEDS ON PAGE 246.



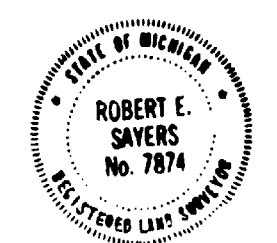
# ASSESSOR'S PLAT OF THE TRUE JOHN MOWRY ESTATE

SITUATED IN THE NW FR'L. 1/4 OF SECTION 4, T7S, R9W,  
BURR OAK TOWNSHIP, ST. JOSEPH COUNTY, MICHIGAN

- LEGEND
1. ALL DIMENSIONS ARE IN FEET.
  2. ALL CURVE DIMENSIONS ARE ARC DIMENSIONS.
  3. CONCRETE MONUMENTS HAVE BEEN PLACED AT ALL POINTS MARKED 'O.'
  4. LOT CORNERS HAVE BEEN MARKED BY A 1/2 INCH IRON BAR.
  5. BEARINGS WERE ESTABLISHED BY THE RIGHT OF WAY LINE OF THE ST. LOUIS, STURGIS AND BATTLE CREEK RAILROAD PASSING THROUGH THE NE 1/4 OF SECTION 5, T 7 S, R 9 W, BURR OAK TOWNSHIP, ST. JOSEPH COUNTY, MICHIGAN, AND RECORDED IN LIBER 88 OF DEEDS ON PAGE 246.



CURVE DATA				
CURVE	RADIUS	ARC	Δ ANGLE	CHORD
①	30.00'	34.09'	65°06'51"	S 55°00'26" W 32.29'



# ASSESSOR'S PLAT OF THE TRUE JOHN MOWRY ESTATE

SITUATED IN THE NW FR'L 1/4 OF SECTION 4, T7S, R9W, BURR OAK TOWNSHIP, ST. JOSEPH COUNTY, MICHIGAN

### SURVEYOR'S CERTIFICATE

I, ROBERT E. SAYERS, SURVEYOR, CERTIFY THAT I HAVE SURVEYED, DIVIDED, AND MAPPED THE LAND SHOWN ON THIS PLAT, DESCRIBED AS FOLLOWS: ASSESSOR'S PLAT OF THE TRUE JOHN MOWRY ESTATE, SITUATED IN THE NW FR'L 1/4 OF SECTION 4, T 7 S, R 9 W, BURR OAK TOWNSHIP, ST. JOSEPH COUNTY, MICHIGAN, IS DESCRIBED AS FOLLOWS: COMMENCING AT THE NW CORNER OF SAID SECTION 4 AND RUNNING THENCE S 0°23'38" E, ALONG THE WEST LINE OF SAID SECTION 4, 1243.88 FEET TO THE POINT OF BEGINNING OF THIS DESCRIPTION; THE BOUNDARY RUNS THENCE EAST 82.5 FEET, THENCE S 0°23'38" W 112.30 FEET TO THE CENTERLINE OF FINDLEY ROAD, THENCE S 71°00'20" E, ALONG SAID ROAD CENTERLINE, 1191.58 FEET, THENCE S 22°27' W 137.28 FEET, THENCE S 57°46'21" E 482.67 FEET, THENCE S 32°46'14" E 364.36 FEET, THENCE N 86°42' W 166.45 FEET, THENCE N 36°25' W 236.14 FEET, THENCE N 73°56' W 256.73 FEET, THENCE N 49°36'30" W 236.48 FEET, THENCE N 45°08'58" W 57.08 FEET, THENCE S 85°54'25" W 33.03 FEET, THENCE S 68°15'19" W 34.61 FEET, THENCE S 59°46'30" W 372.40 FEET, THENCE S 86°31'30" W 257.05 FEET, THENCE WEST 150.00 FEET, THENCE S 18°58'18" W 128.33 FEET, THENCE S 42°40' W 215.88 FEET TO THE WEST LINE OF SAID SECTION 4, THENCE N 0°23'38" W, ALONG SAID WEST SECTION LINE, 1000.44 FEET TO THE POINT OF BEGINNING AND POINT OF ENDING OF THIS DESCRIPTION.

THIS PLAT CONTAINS 20.24 ACRES, MORE OR LESS. THIS DESCRIPTION CONTAINS 38 LOTS; THAT I HAVE MADE SUCH SURVEY, LAND DIVISION, AND PLAT BY THE DIRECTION OF THE TOWNSHIP BOARD OF THE TOWNSHIP OF BURR OAK; THE ORDER TO PREPARE THIS ASSESSOR'S PLAT WAS MADE ON JUNE 4, 1978; THAT SUCH PLAT IS A CORRECT REPRESENTATION OF ALL THE EXTERIOR BOUNDARIES OF THE LAND SURVEYED AND THE SUBDIVISION OF IT; THAT THE REQUIRED MONUMENTS AND LOT MARKERS HAVE BEEN LOCATED IN THE GROUND; THAT THE ACCURACY OF SURVEY IS WITHIN THE LIMITS REQUIRED BY SECTION 126 OF THE ACT; THAT THE BEARINGS SHOWN ON THE PLAT ARE EXPRESSED AS REQUIRED BY SECTION 126(3) OF THE ACT AND AS EXPLAINED IN THE LEGEND.

NOVEMBER 1, 1979  
DATE

SAYERS & ASSOCIATES  
P.O. BOX 212  
STURGIS, MICHIGAN 49091



*Robert E. Sayers*  
ROBERT E. SAYERS, R.L.S. NO. 7874  
PRESIDENT

### CERTIFICATE OF COUNTY ROAD COMMISSIONERS

THE BOARD OF COUNTY ROAD COMMISSIONERS OF THE COUNTY OF ST. JOSEPH, MICHIGAN, DO HEREBY CERTIFY THAT THE ROADS SHOWN ON SAID PLAT WERE IN EXISTENCE AT THE TIME THE PLAT WAS MADE. THIS CERTIFICATION MADE THIS 10<sup>TH</sup> DAY OF NOVEMBER, 1979, IN ACCORDANCE WITH SECTION 209(1) OF ACT 288 OF P.A. 1967.

*Frank Shellenbarger*  
FRANK SHELLENBARGER, CHAIRMAN

*D.W. Arney*  
D.W. ARNEY, MEMBER

*Carl L. Roberts*  
CARL L. ROBERTS, MEMBER

### ASSESSOR'S CERTIFICATE

I, AS ASSESSOR, BY VIRTUE OF THE AUTHORITY VESTED IN SECTION 201(2), ACT 288 OF P.A. OF 1967, HAVING BEEN DULY AUTHORIZED BY THE TOWNSHIP OF BURR OAK, ST. JOSEPH COUNTY, MICHIGAN, HAVE CAUSED THE LAND DESCRIBED IN THE ANNEXED PLAT TO BE SURVEYED, LAID OUT AND PLATTED, AND CERTIFY THAT MOWRY ROAD IS FOR THE USE OF OWNERS OF LOTS WITHIN SAID PLAT, THAT ALL WATERFRONT LOTS EXTEND TO THE WATER'S EDGE OF EBERHARD LAKE ON THE PROJECTION OF THE SIDE LOT LINES EXTENDED AS SHOWN ON THIS PLAT, AND THAT THE PLAT CONFORMS TO SECTIONS 201 THROUGH 288 OF P.A. OF 1967.

*R.E. Sayers*  
R.E. SAYERS, WITNESS

*Donald L. Lancaster*  
DONALD L. LANCASTER, TOWNSHIP SUPERVISOR  
KELLY ROAD  
BURR OAK, MICHIGAN 49091

*Nancy C. Fisher*  
NANCY C. FISHER, WITNESS

### ACKNOWLEDGEMENT

STATE OF MICHIGAN  
ST. JOSEPH COUNTY

ON THIS 3<sup>RD</sup> DAY OF DECEMBER, A.D. 1979, BEFORE ME PERSONALLY CAME THE ABOVE NAMED DONALD L. LANCASTER, ASSESSOR OF BURR OAK TOWNSHIP, KNOWN TO ME TO BE THE PERSON WHO EXECUTED THE ABOVE DEDICATION AND ACKNOWLEDGED THE SAME TO BE HIS FREE ACT AND DEED AS SUCH ASSESSOR.

*Nancy C. Fisher*  
NANCY C. FISHER  
NOTARY PUBLIC IN AND FOR ST. JOSEPH COUNTY, MICHIGAN

MY COMMISSION EXPIRES July 18, 1982

### CERTIFICATE OF MUNICIPAL APPROVAL

THIS PLAT WAS APPROVED ON December 3<sup>rd</sup>, 1979, BY THE TOWNSHIP BOARD OF THE TOWNSHIP OF BURR OAK AS HAVING BEEN MADE AND COMPLYING WITH THE REQUIREMENTS OF SECTION 201 AND 209(4) OF P.A. 288 OF 1967.

*Beverly A. Gestman*  
BEVERLY A. GESTMAN, TOWNSHIP CLERK

### RECORDING CERTIFICATE

STATE OF MICHIGAN  
ST. JOSEPH COUNTY

THIS PLAT WAS RECEIVED FOR RECORD ON THE 11<sup>TH</sup> DAY OF January, 1980, AT 2:45 P.M., RECORDED IN LIBER 6 OF PLATS ON PAGE 61, 62, 63, 64.

*Patricia L. Van Emon*  
PATRICIA L. VAN EMON, REGISTER OF DEEDS

